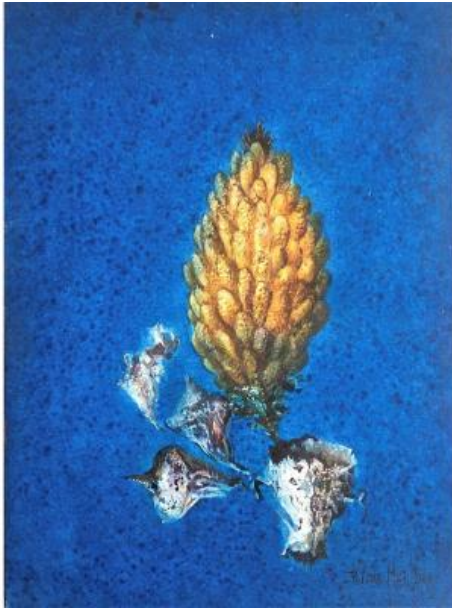




PROANTIC
LE PLUS BEAU CATALOGUE D'ANTIQUITES

Pierre Willy De Muylder (1921-2013). "still Life With The Pine Cone". 1970s.



300 EUR

Signature : Pierre Willy De Muylder

Period : 20th century

Condition : Très bon état

Width : 26 cm

Height : 33 cm

Description

Original wooden frame, silver leaf (faded) and golden chopsticks. Frame dimensions: 33 x 26 cm.

Dimensions of the painting: 22.5 cm x 16.5 cm.
Sign.

Pierre - Willy De Muylder (1921- 2013).

Belgian painter, designer. Training at Saint-Luc in Molenbeek-Saint-Jean and Schaerbeek, at the Brussels Academy at Anto Carte.

First surrealist close to Magritte, he evolves towards lyrical abstraction.

This evolution led him to less figurative worlds in which appear abyssal vegetation, a sprawling fauna conducive to spectral forms, thorny nut shells or anthropomorphic silhouettes adorned with ermine or sumptuous molds.

In the press (His flawless technique is imbued

Dealer

Dupire et Kotek

Antiquités, tableaux, arts appliqués, vintage, objets de charme

Tel : 00 32 495 205 344

Mobile : 0032 474 26 22 88

Avenue de Broqueville 34

Bruxelles 1200

with great magic. "(A. Nardon).

Professor at the Brussels Academy from 1967 to 1981. He was also active as a decorator, muralist and aluchromist.

Has exhibited at the Galerie "Idea Damen" in Louvain in 1999 and at the Galerie "Albert Ier" in Brussels in 2002.

Works at the Cabinet des Estampes in Brussels.