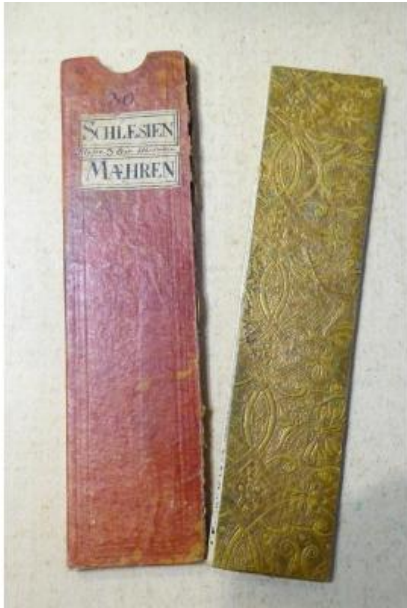




18th Century Color Travel Map, Austerlitz Region, Silesia, Moravia



140 EUR

Signature : J.G. Schreiber

Period : 18th century

Condition : Bon état

Material : Paper

Width : 4,5cm

Height : 18cm

<https://www.proantic.com/en/765145-18th-century-color-travel-map-austerlitz-region-silesia-moravia.html>

Description

Old small travel map engraved on copper and watercolored, signed by Johann George Schreiber (1676-1750). - It folds up into a portfolio with embossed gold paper edges, and fits into its red paper case. Dimensions of the sheet: approximately 32cm x 17.5cm - it is in good condition, colors and gilding fresh. the case is a little split This card is double, on one side: The County of Silesia, on the other the Marquisate of Moravia, both pretty this card is a offprint treated with luxury, and double-sided, from a large book, circa 1750, a considerable geographical sum, bringing together most of the regions of central Europe, between Poland, Bohemia and Moravia. Take a good look at the photos Insured and tracked shipping from France,

Dealer

Eclecticnimes

Curiosity, Collection Cabinet objects,

Tel : +33665241111

Mobile : 06-65-24-11-11

Bellegarde 30127

paypal payments are welcome, credit cards
accepted by with Paypal.

we ship internationally, registered and insured, to
Europe and numerous other countries.