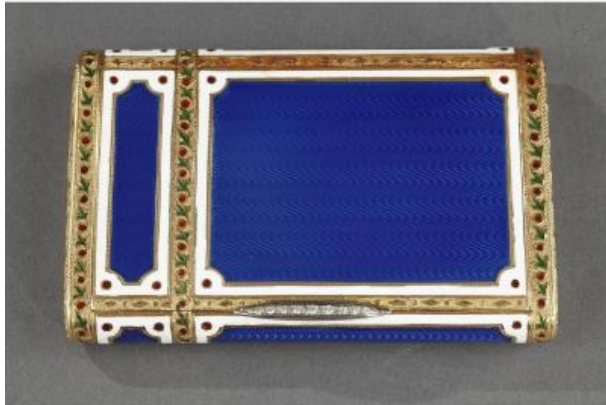




Cigarette Or Card Case 20th Century.

22 000 EUR



Period : 20th century

Condition : Bon état

Material : Gold

Description

Large rectangular case in enameled gold. The panels of the case are embellished with translucent, royal blue enamel that reveals the intricate wave pattern in the gold underneath. Each panel is framed with a border of white enamel as well as a frieze of stylized flowers accented with red and green enamel on a matte gold background. A button inlaid with diamonds serves to open the case. The ornamentation and quality of work draws its inspiration from dance cards of the 18th century.

Weight: 6.2 oz (177 g)

L: 3.9 in (10 cm) W: 2.6 in (6.5 cm) H: 0.6 in (1.5 cm)

Gold marks: Owl, 18 carat gold

Price: 22000 EUR.

Dealer

Ouaiss Antiquités Galerie des Arts

Object of vertu

Mobile : 0617 08 51 53

8 rue Miromesnil

Paris 75008