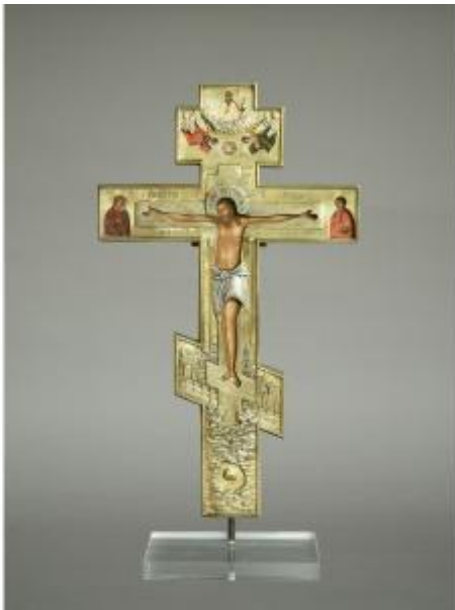




Icon Palekh Cross With A Vermeil And Enameled Riza Kasteel De Wijenburgh



9 500 EUR

Period : 19th century

Condition : Parfait état

Material : Sterling silver

Width : 23 cm

Height : 39 cm

Depth : 2,6 cm

Description

An exceptional, museum-quality cross from the Palekh school, dating from the late 19th century, featuring a riza made of vermeil-gilded silver and enamel. This cross was part of the Kasteel de Wijenburgh collection (1973-1983). The inventory number was P4269. The steel wire stand was made in the icon collection. KASTEEL DE WIJENBURGH was an icon center that organized international exhibitions and published catalogs. Dimensions: Height 43 cm, Width 23 cm, and Depth 2.6 cm. The cross features a distinctive composition rarely seen elsewhere. Mary and Saint are positioned right next to the crossbeam, which is why the cross is wider than usual. Thus, the angels and the Holy Spirit above the cross are unique elements. The riza is made of finely chased and

Dealer

Galerie D'antiquités Martin Puch

Antiques Gallery Russian and Greek Icons o European Sculptures

Tel : 0049 (0)151 15566068

Mobile : 0049 (0)151 15566068

Fax : 0049 (0) 89 6133852

Bachweg 16

Munich/ Oberhaching 82041

enameled vermeil silver. It is of exceptional quality, both in terms of the goldsmithing and the painting. A rare collector's item.