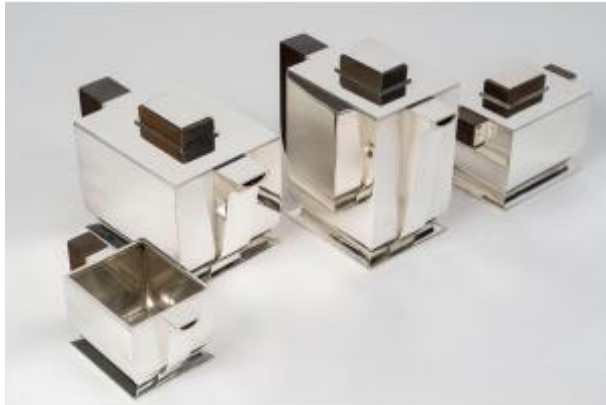




Tetard Freres - Art Deco Silver Tea And Coffee Set, Cubist Model Circa 1925/1930

24 000 EUR



Signature : TETARD FRERES

Period : 20th century

Condition : Parfait état

Material : Sterling silver

Description

This elegant four-piece tea and coffee service perfectly illustrates the Art Deco aesthetic in its most modernist and architectural form. Made from a design by Valéry Bizouard. In the context of French decorative arts of the 1920s and 1930s, Valéry Bizouard is best known as a designer and artistic collaborator of Tétard Frères. For this service, he drew inspiration from the geometric forms of Cubism and modern architecture. The set comprises a coffee pot, a teapot, a covered sugar bowl, and a creamer. Each piece is designed according to an orthogonal construction of remarkable formal purity: the rectangular bodies rise in compact volumes with subtly softened angles, resting on projecting bases that reinforce their architectural presence. The flat lids, perfectly integrated into the forms, are topped

Dealer

Emmanuel Redon Silver Fine Art

Silverware and Silversmith of the 19th and 20th centuries

Tel : Skype : emmanuel.biron

Mobile : 0671685794

Fax : emmanuel.silver.fine.art@gmail.com

Marché BIRON - Galeries 6 - 127/128 - 85 rue des rosiers
Saint-Ouen 93400

with stepped, quadrangular handles, evoking the tiered motifs characteristic of the Art Deco style. The handles, made of dark exotic wood, provide a refined counterpoint to the gleam of the mirror-polished silver. Their angular design and lateral placement further emphasize the geometric character of the composition. The spouts, reduced to their most essential form, blend harmoniously into the forms without disrupting the balance of lines. With its remarkably modern design, combining strict geometry, functionality, and understated luxury, this service stands as a particularly accomplished testament to the excellence of French silversmithing during the Art Deco period.

Dimensions and weight: Coffee pot: 17 × 8.5 cm; height 15 cm; base 10 × 8.5 cm; weight 870 g. Teapot: 19 × 10 cm; height 11.5 cm; Base 12 × 10 cm; weight 980 g. Sugar bowl: 13 × 8.5 cm; height 9 cm; base 10 × 8.5 cm; weight 600 g. Milk jug: 13 × 6.5 cm; height 6 cm; base 7.5 × 6.5 cm; weight 270 g. Total gross weight: 2,720 g. Material: 950/1000 sterling silver. Hallmark: Minerva. Period: Art Deco, circa 1925/1930. Silversmith: Tétard Frères. Origin: France/Paris