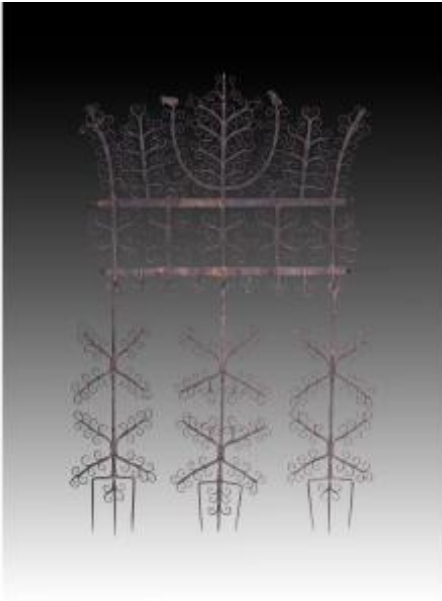




Espetera. Wrought Iron. 19th Century.



450 EUR

Period : 19th century

Condition : En l'etat

Material : Wrought iron

Width : 71 cm

Height : 114 cm

Description

Espetera. Wrought iron. 19th century.
Wrought-iron decoration inspired by traditional motifs from certain regions of Spain. The piece features a wrought-iron decorated section forming simplified plant scrolls, as well as two birds perched at the top, intended for wall mounting. Several hooks hang from this part; three of them are vertical elements ending in tridents and decorated in the same style as the wall part, but without animals. Compare it to the one in the National Costume Museum in Madrid (from Santa María de Riaza) or to those in the palace of the Countess of Lebrija in Seville. - Dimensions: 71 x 8 x 114 cm

Dealer

Z sierra Arte y Décoration

Antiques and Decoration

Tel : +34 914315812

Lagasca 36

Madrid 28001