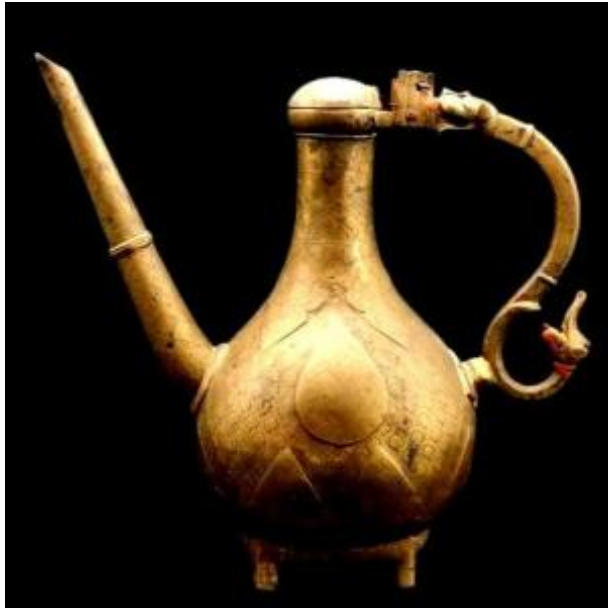




Gilt Bronze Ewer, Chased, Mughal Art, 19th Century, Decorated On All Sides



1 250 EUR

Signature : Art Moghol

Period : 19th century

Condition : Bon état

Material : Bronze

Width : 28 cm - 11"

Height : 24,5 cm - 8"

Description

Artist: Mogul Gilt bronze cast ewer. Decorated on all sides and from the first part of the 19th century.## A similar model is present in the Saint Petersburg Museum under inventory no. VG56. Engraved throughout, covered with a fig-shaped pear-shaped body in heavy, solid cast bronze. Graceful esse handle decorated with two dog heads at the ends accompanied by subtle engravings throughout the object make this a ewer of great beauty and rare finesse. The engraved decoration on the body and throughout the object, of very fine leaves and flowering plants. Arts and letters, clothing, carpets, silk make these places, a delight for collectors of Islamic art objects. The use of ewers, was essentially intended for ablutions, washing the face and hands, at the time of religious

Dealer

Winstein

Antique & semi-antique rugs, objects from the world, paintings, furniture

Tel : 00 33 (0)6 13 36 09 30

Mobile : 00 33 (0)6 13 36 09 30

La Tour - Rue des Remparts

Revest-du-Bion 04 150

ceremonies."The party of initiates, standing ready to serve,the beauties on all sides hold the ewer in their hands;the times of love wash their hands with all their soul;while the beauties pour the water, ewer in hand"Reading and translation , A.S. Melikian-Chirvani, 1973 p 119.From the 19th century and in very good condition.Set on four feet, it has a long, straight, slightly hexagonal spout, ringed in the middle.Small remnants of red paint on the underside and on a dog's head.These wonderful bronzes, were under the Safavid, Kadjar and Mughal dynasties, and in other countries around Persia, a prominent alternative to gold and they enjoyed the same status.The Mughals originated in Persia and the Middle East, but entered India in the XV/XVI century.By the 17th century, they ruled the entire Indian subcontinent.These objects certainly lived on as the centerpieces of Moghul, Persian, Central Asian houses.Dimensions : Height : 24,5 cm - Width : 28 cm , weight : 1790 grsWe have other ewers of different provenances and materials on Proantic. FREE SHIPPING TO FRANCE by colissimo 0EUR / EUR 15EUR / WORLD 25EURFor further information, please contact me at : 06 13 36 09 30 or winsteinprovence@gmail.comwww.winsteinprovence.com