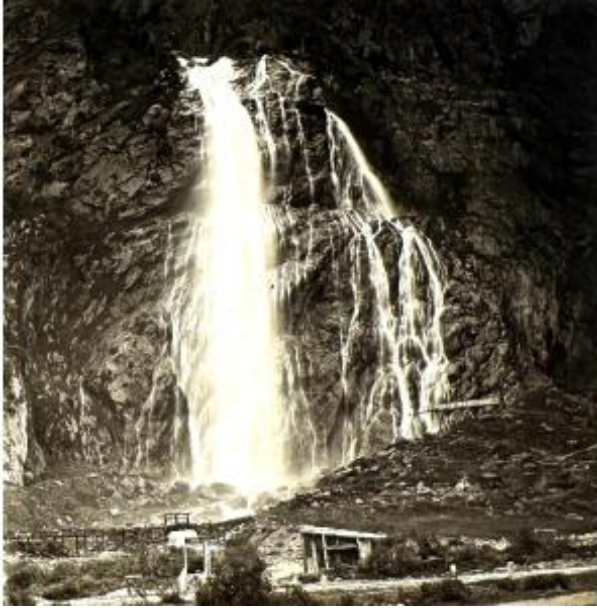




## Ferrier Et Soulier Stereo Glass Plate



120 EUR

Signature : FERRIER & SOULIER

Period : 19th century

Condition : Très bon état

Material : Glass

### Description

Very beautiful glass plate stereoscopic viewformat 8.5 x 17 cmPissevache waterfall, Martigny, SwitzerlandBy 1875, the Pissevache waterfall was already a tourist and industrial attraction in Valais. It powered mills and workshops, and a footbridge allowed visitors to pass under the waterfall.The waterfall was then known for its power and wild beauty, and was already inspiring painters and writers and photographers.The Ferrier et Soulier company was founded by Claude-Marie FERRIER (1811-1889)and Charles SOULIER (1816-1886) in 1859. It specialized in the production of stereoscopic views.Soulier's plates depicted a variety of subjects, including landscapes, monuments, urban scenes and historical events.Stereoscopic glass plates were considered

### Dealer

**La Valise Arlesienne**

Vintage photography

Mobile : 0612584032

8 rue du docteur fanton

Arles 13200

high-quality products and aesthetically superior to paper stereoscopies. They were heavier and more fragile, but offered better image quality and a more immersive visual experience. The works of Ferrier and Soulier are today considered collector's items. Link to

<https://www.lavalisearlesienne.com/product-page/ferrier-et-soulier-plaque-de-verre-st%C3%A9r%C3%A9o-cascade-de-pissevache-c-1875>

<https://www.proantic.com/en/1753403-ferrier-et-soulier-stereo-glass-plate.html>