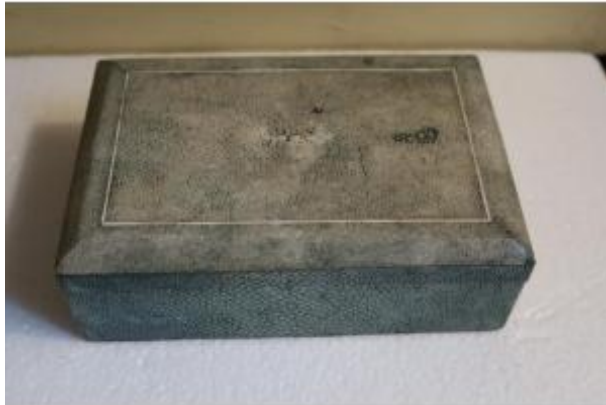




Stingray Box 1930s



390 EUR

Period : 20th century

Condition : Etat d'usage

Material : Shagreen

Length : 15,5 cm

Width : 10 cm

Description

Rectangular box in stingray, the lid decorated with cut panels is adorned with a fillet of ivory. The inside of the box is veneered in mahogany. Nice condition, note some wear (black stain) and a slight crack on the lid. Period : 1930s Shagreen leather is a material derived from shark or ray skin. Shagreen was widely used in the 18th century for the creation of cases, it was rediscovered in the 1930s for the creation of furniture and caskets. Shipping costs for France by Colissimo with tracking : 25 EUR.

Dealer

Blandine Lefèvre

Antiquités, Objets d'art

Tel : 01 42 46 40 95

Mobile : 06 26 94 00 58

sur Rendez-vous

Paris 75009