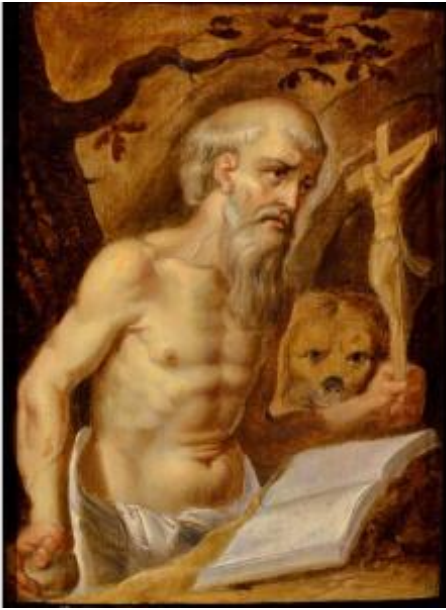




Saint Jerome, By A Follower Of Prospero Fontana (bologna 1512-1597)



4 900 EUR

Signature : Ecole bolognaise du XVIe siècle, Entourage de Prospero Fontana (Bologna 1512-1597)

Period : 16th century

Condition : Très bon état

Material : Oil painting on wood

Width : encadré 42 cm.

Height : encadré 53 cm.

Description

Saint Jerome 16th-century Bolognese School Circle of Prospero Fontana (Bologna 1512-1597) Technique: oil on poplar panel, parquetry on the reverse Dimensions: panel 41 x 29 cm, frame 53 x 42 Details of the work (LINK): This splendid panel, painted in the final decades of the 16th century, depicts Saint Jerome, a monk who lived between the 4th and 5th centuries, portrayed according to the iconography of the hermit in desert retreat as he is about to strike his chest with a stone as a sign of penance. The painting, of Emilian origin, undoubtedly draws on the models created by Prospero Fontana (1512-1597), a skilled painter of the Bolognese Mannerist school who, after an apprenticeship with Perin del Vaga, opened a school in Bologna that played a significant role in

Dealer

Antichità Castelbarco

Old master paintings

Tel : +39 333 2679466 - Alessandro Padovani

Viale Giuseppe Canella, 18

Riva del Garda 38066

the development of Emilian painting in the second half of the 16th century. The quality of the execution and the character of the figure suggest that the panel should be included in the highly complex catalog of works produced by the workshop. The elderly saint is depicted half-naked, his slender body highlighting his defined musculature, as he kneels, striking his chest with a stone and gazing at Christ on the processional crucifix, which he supports with his left arm, resting his elbow on a sort of altar carved into the rock, upon which also rests the open book, his canonical iconographic attribute, alluding to his prolific work as a biblical scholar and theologian, which made him a forerunner of the Renaissance humanist. In the shadows to the left of the hermit stands a lion with a sly expression. The work displays a blend of pictorial styles that makes it difficult to attribute it to a specific artist: one can discern transitional elements between Flemish-influenced Mannerism and the Italianate taste evident in the figure's composure. The panel, in excellent condition, comes with a photographic certificate of authenticity in accordance with the law. Professional backing has been applied to the reverse side. We handle and arrange the transport of purchased works, both within Italy and abroad, through professional and insured carriers.