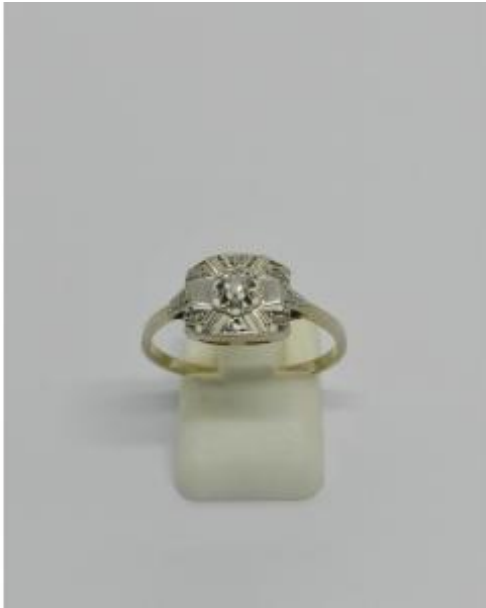




Openwork Diamond-set White Gold And Platinum Ring, Art Deco Model Circa 1930.



640 EUR

Period : 20th century

Condition : Bon état

Material : Gold

Length : 1,2 cm

Width : 0,9 cm

Height : 0,5

Description

Ring set in white gold 750°/°° with eagle head hallmark, and set in platinum with dog head hallmark, rectangular and slightly domed shape, openwork and set with grains of roses of natural diamonds, in the center in claw setting a small faceted natural diamond approx. 0.05ct, small decoration on recall ring, French work of the Art Deco period circa 1930, gross weight 1.8gr, finger size 61, dimensions as worn. All taxes and customs duties for foreign countries are the responsibility of the buyer. For shipment outside Europe or the rest of the world, please contact us.

Dealer

Hervé Schaffner

Antique jewelry and small goldsmith collections.

Tel : 0388501725

Mobile : 0614608973

Rue du Muhlbach

Dinsheim-sur-Bruche 67190