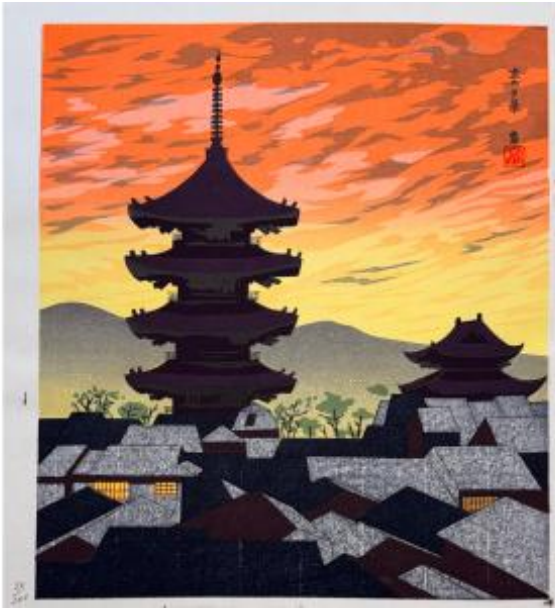




PROANTIC
LE PLUS BEAU CATALOGUE D'ANTIQUITES

Japanese Print From Tokuriki: Night View Of Kyoto, Yasaka Pagode



450 EUR

Signature : TOKURIKI TOMIKICHIRO (1902-2000)

Period : 20th century

Condition : Bon état

Material : Paper

Width : 275 mm

Height : 300 mm

Description

From the suite: Twelve Views of the Four Seasons of Kyoto Beautiful proof signed and numbered , beautiful colors, Shin Hanga Nishiki-e Ca. 1970 The Yasaka pagoda, also known as Hokan-ji temple, is a historic monument emblematic monument of Kyoto's rich cultural heritage. Located in the Higashiyama district, it stands amidst sixteen hundred Buddhist pagodas, four hundred Shinto shrines Shinto shrines and numerous palaces and gardens. This iconic five-storey pagoda is a testament to traditional Japanese craftsmanship. part of Kyoto's urban landscape for centuries. Its earthquake-resistant construction illustrates the ingenuity of engineers of ancient Japan. The Yasaka pagoda has been a recurring subject Japanese prints for centuries. Renowned

Dealer

galerie Maillard Fouilleul
Old and modern Prints, Drawings
Tel : 0142465320

11 passage verteau
Paris 75009

artists such as Teruhide Kato, Clifton Karhu, Tomikichiro Tokuriki, Toshijiro (Nenjiro) Inagaki and Takeji Asano have immortalized it in numerous celebrating its beauty through the seasons and in different lights. Tomikichiro Tokuriki was a Japanese wood engraver, representing the twelfth generation of a family of Kyoto craftsmen. He graduated from the Kyoto City School of Fine Arts and the Kyoto City Specialist School of Painting in 1924. After the Second World War, he founded the publishing company Matsukyu to produce and distribute his own prints as well as pieces by Shin Hanga and Sosaku Hanga by other artists. Tomikichiro Tokuriki is an influential figure in the contemporary printmaking movement in Japan. He was the official artist of Honganji temple, and was commissioned to engrave various temples across Japan, including the famous sanctuaries of Ise. His engravings can be found in the collections of the Museum of Fine Arts, Boston, and the Museum of Modern Art, New York.

Image width: 245.00 Image
height: 280.00 Sheet width: 275.00
Sheet height: 300.00