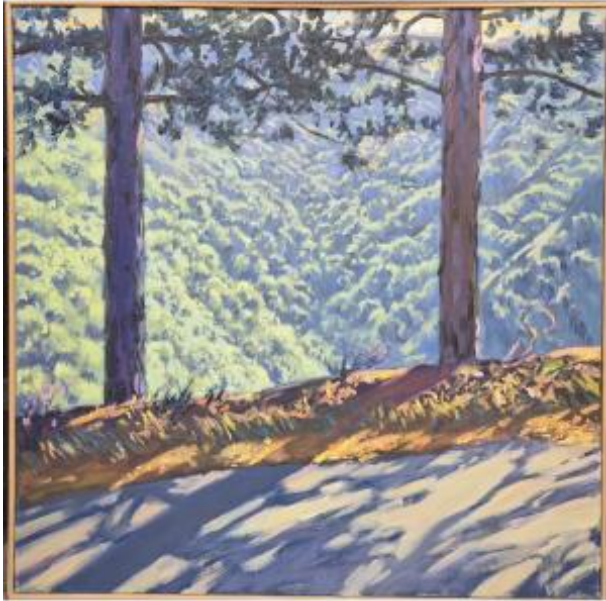




Valentin (b. 1945), Landscape With Pine Trees Overlooking Conques



1 300 EUR

Signature : Valentin

Period : 20th century

Condition : Parfait état

Material : Oil painting

Width : 70

Height : 70

Description

Valentin (b. 1945) Pine landscape overlooking Conques Oil on canvas signed and dated 2008 on the back. Dimension: 70 x 70 cm Biography from la galerie labarbacane website: Valentin was born in Boulogne (92) in 1945. From 1963 to 1968 he studied in Paris: Métiers d'Arts and Beaux Arts. From 1968 to 1972; he created colorful environments in architecture and painted. Suddenly, he burnt his production in a life of wandering. He took up painting again in 1978 with his children's tubes of gouache facing the wild nature of northern Aveyron, which took him in. Then he never stopped painting... The Series: "Les Deux Pins", 1988 - 2013: Some 300 canvases and around twenty engravings. Le Guetteur de l'instant ... "Valentin, for years, has been coming back to the same place: a certain bend in a small,

Dealer

**JL Fine Art**

Tableaux du XVIème au XXème siècle

Tel : [leroy.julien33@gmail.com](mailto:leroy.julien33@gmail.com)

Mobile : 0676547437

11 Rue Danielle Casanova

Paris 75001

almost deserted road on a slope of the mountain overlooking the medieval village of Conques, not far in fact from a hut he once made for himself (in a ruined farmhouse) and which he re-enters from time to time for long, quasi-ermitic periods. The fact is, as soon as he can, he returns to this bend in the road, where - facing these two pine trees, hieratic sentinels of a sacred space - he tries to capture the kaleidoscopic variations of light at all hours, in all seasons and in all weathers. As we know, Hokusai painted Mount Fuji-Yama more than a hundred times, Cézanne nearly eighty times Mont Saint Victoire, and so did a great number of artists who set out to represent the corner of the planet that fate had devolved upon them, making it the particular angle from which all possible perspectives unfolded, the cardinal point of the entire universe."