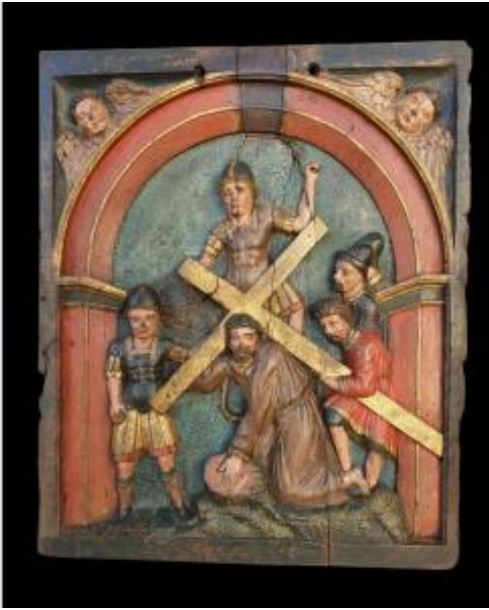




Way Of The Cross Panel 16th Century



2 500 EUR

Period : 16th century

Condition : Bon état

Material : Painted wood

Width : 56,5cm

Height : 68cm

Depth : 5cm

Description

Oak panel carved in polychrome bas-relief representing the fifth station of the Stations of the Cross, with Christ kneeling and Simon de Cyrene helping Jesus to carry his Cross. The arcature is framed by two winged angels, with a Roman soldier (in feet) standing to his left, another behind the cross and two others behind Simon de Cyrene. The whole is covered with original polychrome (rare). Reinforcements are present on the back of the panel to prevent it from opening over time. Late Renaissance period. France (Nord ?) second half of the 16th century.

Dealer

Galerie Guécheff

Haute Epoque

Mobile : 06 88 23 99 92

Saint-Amand-Montrond 18200