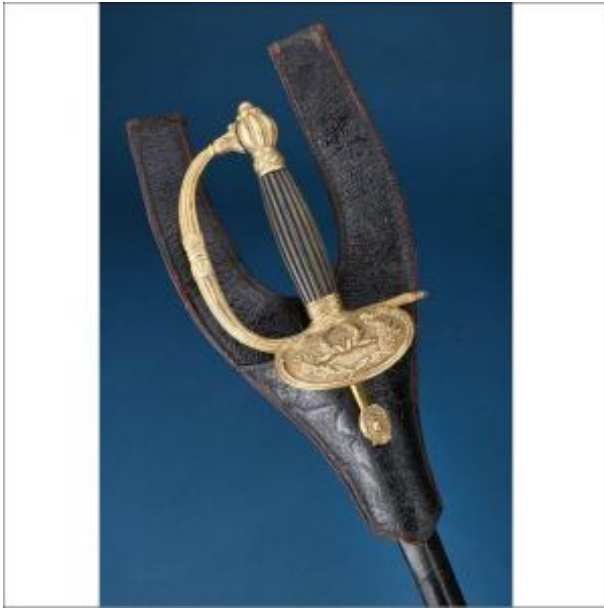




France. Antique French Police Officer's Sword. Klingenthal C.1870



570 EUR

Period : 19th century

Condition : Bon état

Length : 91,5 cm (36 in)

Description

Elegant antique French police officer's sword, made around 1870 and signed by the prestigious firm Coulaux & Cie of Klingenthal. This is a complete, harmonious and very well preserved piece, retaining all its essential elements, including the original leather scabbard and the original leather hanger, something increasingly uncommon in this type of 19th century weapon. The hilt is made of gilt bronze with fine chased work visible throughout the mounting. The knuckle guard has the classic enveloping form, with fluted lines and decorative terminals, and is completed by an attractive ribbed melon shaped pommel in two tiers, a detail especially characteristic of these French officer's models from the second half of the 19th century. The grip, made of dark ebony wood with vertical

Dealer

IberAntiques

Antiques and Collectibles

Tel : +34 976 45 39 31

Mobile : +34 617 46 85 03

Calle Juan Cabrero, 18 Local AA

Zaragoza 50007

fluting, offers an excellent contrast with the gilded mounting and gives the whole piece a particularly elegant presence. The oval guard stands out for its relief decoration on a stippled ground, structured around a closed laurel wreath framed by another surrounding laurel wreath. This ornamentation is closely associated with authority, public service and institutional prestige. The whole presents a sober and refined aesthetic, highly representative of regulation side arms carried by French police officers of the period. The blade is straight, of triangular section, and shows a clean and slender execution, consistent with French officer's swords intended for administrative and ceremonial use. It retains acid etched decoration on the forte, with vegetal and ornamental motifs still clearly visible, as well as the signature Coulaux & Cie Klingenthal at the base, confirming its origin in one of the most important centers of edged weapons production in France. The surface shows normal signs of old use and small spots consistent with age, but no major damage or aggressive cleaning, maintaining a very attractive presentation. The scabbard is of black leather and retains its gilt metal mounts, preserving a very elegant appearance fully consistent with the status of the piece. It shows wear from use and an old repair near the chape that does not detract from the overall appearance of the set. It is accompanied by the original leather hanger, black on one side and red on the other, a particularly interesting and unusual detail that reinforces the authenticity of the ensemble and its collector's appeal. The leather remains flexible and shows natural wear consistent with age, allowing a clear understanding of how this sword was originally worn. It is, therefore, a very complete antique ensemble composed of sword, scabbard and hanger, all coherent in chronology, typology and preservation. It is a piece of notable presence, ideal for collection, display or study, and an excellent example of the presentation weaponry used by French officers in the 19th century. The

Coulaux & Cie signature adds special interest for collectors of French edged weapons and pieces related to Klingenthal. The fact that it retains its original hanger, together with the good quality of the mounting, the attractive decoration of the guard and the good overall condition of the blade, makes this example a particularly balanced, visually appealing and commercial piece within its category. A complete, elegant piece that is becoming increasingly scarce on the market, especially as it still preserves its original hanger, its Klingenthal signed blade and a very attractive overall presentation. Measurements: Overall length: 91.5 cm (36 in). Blade length: 77 cm (30.3 in). History of this French police officer's sword This sword belongs to the regulation type used by officers of French police bodies in the second half of the 19th century, at a time when civil authority was also exercised through armed physical presence. It is not a merely symbolic or ceremonial weapon, but a sword designed to be effective in real close range confrontations. Its rigid triangular section blade corresponds directly to the principles of practical fencing of the period. This type of geometry provides great penetrating power, concentrating the force of impact on an extremely fine point. Although visually it may appear light or elegant, its technical conception makes it a particularly dangerous weapon in individual combat. The quick and deep thrust was the essential action of this type of sword, capable of causing serious or fatal injuries with relative ease. The general balance of the weapon, its light weight and the stiffness of the blade indicate a clear adaptation to close combat in an urban environment, where speed of reaction and precision were more decisive than cutting power. This type of sword could be used both for personal defense and in situations of riot control or direct confrontation. Its manufacture by Coulaux & Cie in Klingenthal places this piece within a tradition of high technical quality. For centuries Klingenthal was one of the principal European centers for the production of edged

weapons, and blades signed by this manufactory are especially valued for their strength, controlled elasticity and finish. This particular sword therefore represents a synthesis of functional weapon and symbol of authority. Its design does not respond solely to aesthetic criteria, but to a practical logic of real use within the context of 19th century French policing, in which the officer had to be prepared for direct confrontation if the situation required it.