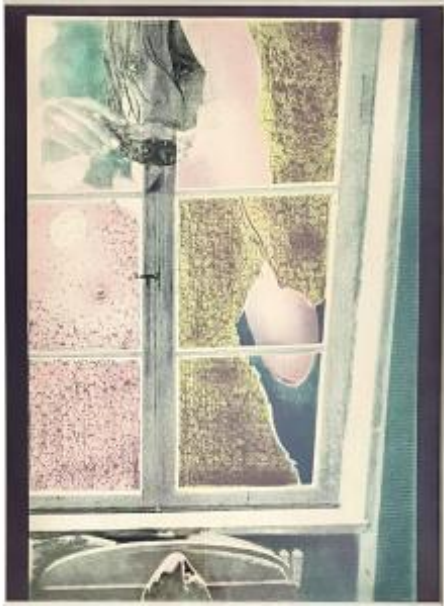




Pol Mara (antwerp, 1920-1998). Lithograph. "peeping Out"1974. Pop Art



270 EUR

Signature : Pol Mara

Period : 20th century

Condition : Parfait état

Material : Paper

Length : 72 cm

Height : 91 cm

Description

Aluminum frame, dimensions: 91 x 72 cm. Size of lithograph: 73 x 53.5 cm. Signed , Tirage hors commerce (H.C)All photographs were taken with the glass. Pol Mara (Antwerp 1920-1998) is a major figure in Belgian New Figuration and Pop Art. At the end of the 1950s, after figurative beginnings with surrealist overtones, Pol Mara became a widely acclaimed abstract artist. In 1955, he won the Prix Jeune Peinture Belge and, a few years later, helped found the G58 group in Antwerp. At the beginning of 1963, Pol Mara opted for new forms of expression reminiscent of American and British art, but unlike the critical and protest Pop Art, he emphasized human emotions. He inspired by advertising and the photographic images of consumer society and photographic images of consumer society, would

Dealer

Dupire et Kotek

Antiquités, tableaux, arts appliqués, vintage, objets de charme

Tel : 00 32 495 205 344

Mobile : 0032 474 26 22 88

Avenue de Broqueville 34

Bruxelles 1200

be significant in the During his lifetime, he
enjoyed major retrospectives in the Netherlands,
France, Germany, Italy, Switzerland and the U.S..