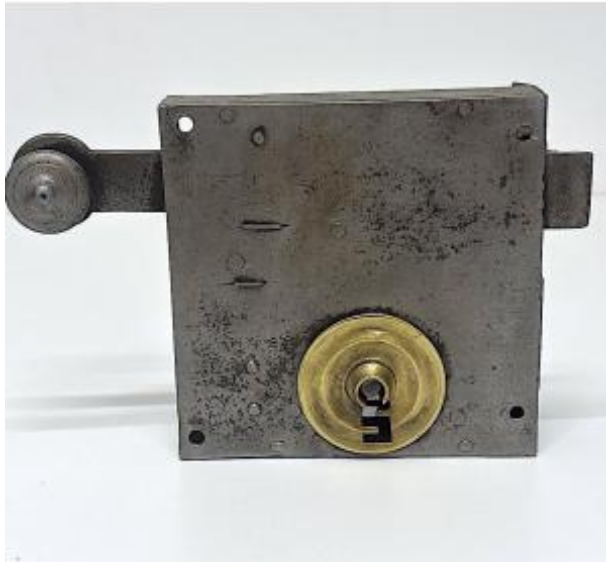




Antique Pull-chain Lock With Original Double Key Ref1113



230 EUR

Period : 19th century

Condition : Bon état

Material : Wrought iron

Length : 21,5 cm.

Description

Antique pull-lock with original double key that locks with a double turn - brass plate - Period: early 19th century. Good condition: it works perfectly. Total length including pull and strike plate: 21.5 cm. Case dimensions: 13.6 x 13.6 cm. Case thickness: 3 cm. Total depth at the keyhole: 8 cm. Total depth including key and lock opening: 15 cm. Weight: 1.5 kg. **SHIPPING:** To find out the shipping costs before purchasing, click on Buy Online and select your country, or contact us by email. Careful packaging. Shipped via Colissimo tracked service, nationally and internationally, registered with insurance. **PAYMENT:** Payment methods: French check, bank transfer, PayPal, or credit card (via PayPal). **A QUESTION?** French speakers: by phone or email. Non-French speakers: by email, please

Dealer

A Coté Antiquités

PAINTING, SCULPTURE, FRAMEWORK, GLASSWARE,
CERAMIC, COLLECTION OBJECTS

Mobile : 06 12 60 39 35

Fax : alainribeyron@hotmail.fr

RIBEYRON ALAIN : 8 bis rue du Puits Marel
VERGÈZE 30310

specify your country. Phone: Mobile 06 12 60 39

35