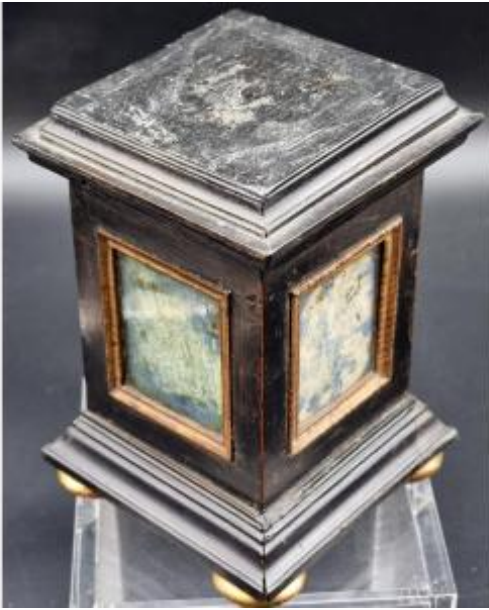




Ebonized Wooden Base Decorated With Faux Lapis Lazuli Northern Italy, Late 17th - Early 18th



300 EUR

Period : 18th century

Condition : En l'etat

Material : Gilted wood

Width : 11

Height : 16

Depth : 11

Description

Refined quadrangular base in ebonized wood, datable to the late 17th and early 18th century. The structure, compact and well proportioned, features decoration on three sides only, indicating a non-central placement. Within these reserved areas are set delicate papers painted in faux lapis lazuli, positioned recessed behind protective glass. This technical solution creates an elegant sense of depth and a vibrant marble-like effect, characteristic of decorative taste between the late 17th and early 18th century. The reserved areas are framed by gilded mouldings, creating a pleasing contrast with the dark ebonized surface of the wood. The base rests on four small gilded feet, lifting it from the surface and visually lightening the volume while enhancing its overall refinement. The upper

Dealer

Antichità Palladio

Antiquités

Mobile : +393483229040

Viale sant'Agostino 533

Vicenza 36100

surface shows a slight inclination, attributable to the natural movement of the wood over time, without affecting the stability or functionality of the object. Conceived as a display base, it is ideal for supporting and enhancing statues, bronzes, small marble sculptures or collectible objects, offering a support with strong antiquarian character. The condition is fairly good, with wear and signs of age consistent with its period. The wood is sound, with an authentic patina and a clear sense of period character. Dimensions: Base: 11 × 11 cm Height: 16 cm For further information, photographs or technical details, please do not hesitate to contact us. Worldwide shipping available with professional packaging.