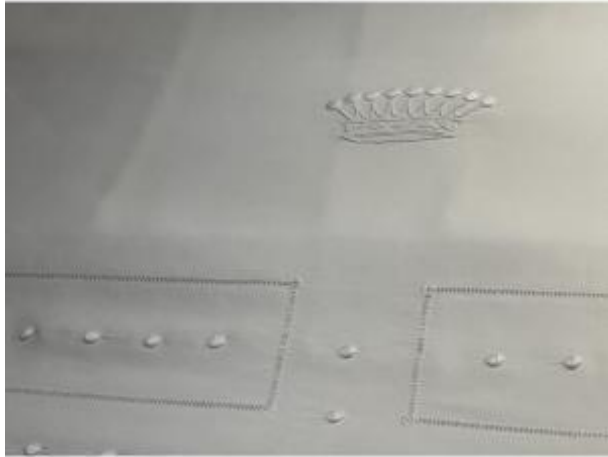




## Large Antique Castle Drape - Very Fine Linen Thread, Hand-embroidered Crown And Plumetis Detail

275 EUR



Period : 19th century

Condition : Très bon état

Material : Linen

Length : 300

Width : 240

### Description

Magnificent large antique linen sheet from a château, crafted from exceptionally fine linen with a light and silky weave, a testament to the expertise of the grand aristocratic trousseaux of the 19th century. The piece features an impressive hand-embroidered crown, 5 cm high and 12 cm wide, executed in remarkably fine raised embroidery. The entire edge of the sheet is adorned with plumetis embroidery arranged in perfect symmetry: delicate and even needlework, executed entirely by hand. A piece of rare refinement, the fabric is a luminous white, supple and fine to the touch--typical of prestigious 19th-century linens. No monogram, allowing for mixed use or personalization. Dimensions: 2.40 m x 3.00 m Period: 19th century Crown: 12 cm x 5 cm Material: Very fine linen Provenance:

### Dealer

#### SAS ANTIKETTOFFE

Old Household Linen Old Textiles Embroidery Coat of Arms

Crown Monogramm

Tel : 0679319954

Mobile : 33679319954

86, impasse des Crouis

Tourrettes 83440

Château - Southwest France