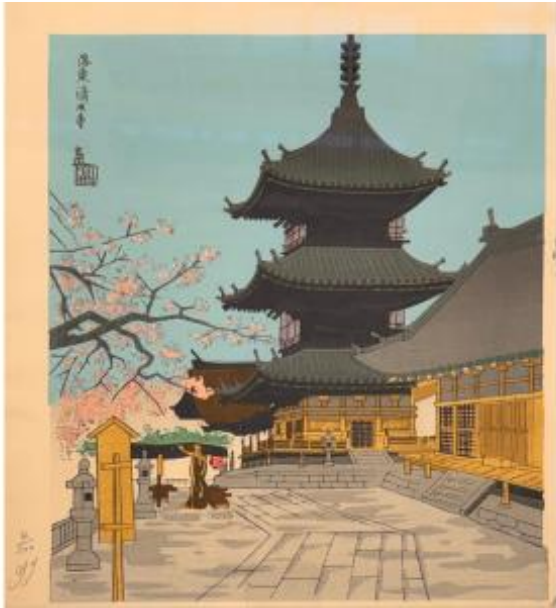




PROANTIC
LE PLUS BEAU CATALOGUE D'ANTIQUITES

Japanese Print By Tokuriki: Temple Kiyomizu, Kyoto



400 EUR

Signature : TOKURIKI TOMIKICHIRO (1902-2000)

Period : 20th century

Condition : Bon état

Material : Paper

Width : 275 mm

Height : 300 mm

Description

From the series: Twelve Views of the Four Seasons of Kyoto. Beautiful numbered print, beautiful colors, Shin Hanga Nishiki-e. More than 1250 years have passed since the founding of Kiyomizu-dera Temple. Halfway up Mount Otowa, one of the mountains in the Higashiyama massif in Kyoto, stands the temple, where a great number of visitors come to honor Kannon, a deity of mercy and compassion, which is why the temple is known as "Kannon's Reijo." "Reijo" means "holy place." Tomikichiro Tokuriki was a Japanese woodblock engraver, representing the twelfth generation of a family of artisans from Kyoto. He graduated from the Kyoto City School of Fine Arts and the Kyoto City Specialist School of Painting in 1924. After World War II, he founded the Matsukyu publishing company to

Dealer

galerie Maillard Fouilleul
Old and modern Prints, Drawings
Tel : 0142465320

11 passage verteau
Paris 75009

produce and distribute his own prints as well as Shin Hanga and Sosaku Hanga prints by other artists. Tomikichiro Tokuriki was an influential figure in the contemporary printmaking movement in Japan. He was the official artist of Honganji Temple and was commissioned to print at various temples throughout Japan, including the famous Ise Grand Shrine. His prints are held in the collections of the Museum of Fine Arts, Boston, and the Museum of Modern Art, New York. Image Width: 245.00 Image Height: 280.00 Sheet Width: 275.00 Sheet Height: 300.00