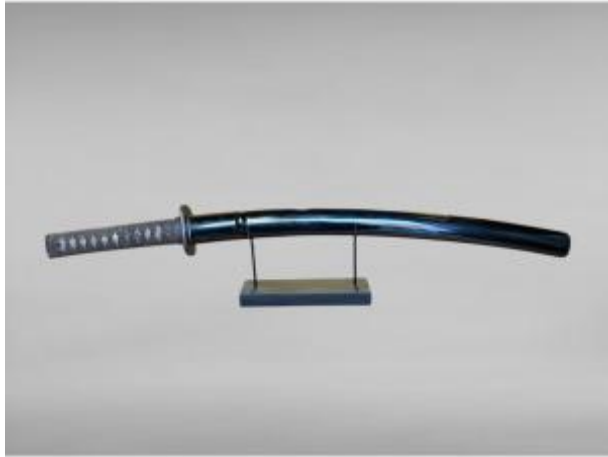




---

Japanese Wakizashi Sword, Signed Blade - Edo Period (1603-1868).

2 250 EUR



Period : 19th century

Condition : Bon état

Material : Wrought iron

Length : 67,5 cm.

Height : 6,5 cm.

Depth : 6,5 cm.

Description

JAPAN - Edo Period (1603-1868). Samurai Wakizashi. KASHIRA in stamped and chased copper with high relief decoration of plant motifs (wear). FUSHI in chased metal with plant motifs. TSUKA in wood covered with ray skin and brown silk braid. MENUKI in chased and patinated copper depicting a phoenix. KOZUKA in chased, patinated, and gilded copper depicting a chilong dragon on a nanako background, the blade signed. TSUBA kaku-maru-gata in wrought iron, signed. SAYA in wood and glossy black lacquer. Simple copper HABAKI. Straight blade, regular hamon, straight and well-defined, the tang pierced twice, signed on both sides of the tang. Sold with stand. Dimensions: 67.5 x 6.5 x 6.5 cm. Blade length with tang: 55 cm.

Dealer

**ANTIQUES YF**

Arts du samurai et Arts du Japon

Mobile : 0608649576

4 allée de pomone

Gressy 77410