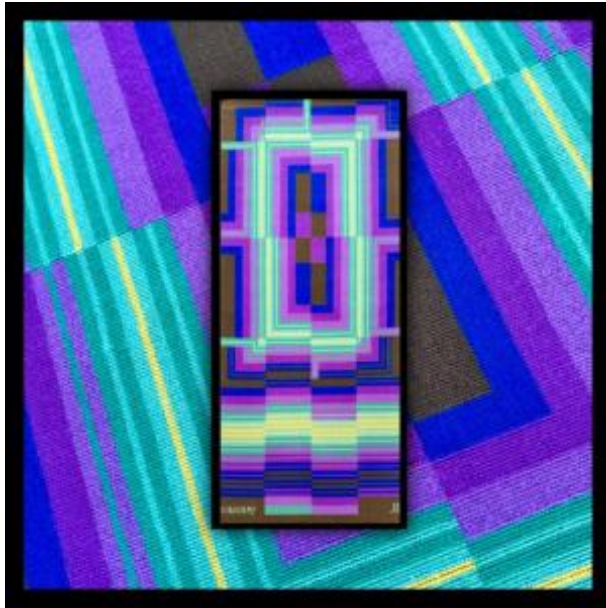




**Tapestry : Carpet By Jean Claude Bissery. Circa 1970**



2 200 EUR

Period : 20th century

Condition : Très bon état

Material : Wool

Length : 140

Width : 69

Diameter : n°353

**Description**

Jean-Claude Bissery, born in 1930. Signed JFB on the fabric and on the label. Produced at the French Center for Carpets and Tapestries, under the direction of Dermagne, Art Publisher. Number: A00133 -- Copy no. 11. Technique : Princess stitch. This tapestry, with its rigorous geometric design, illustrates Jean-Claude Bissery's exploration of color, structure, and optical rhythm. The superimposition of chromatic bands and rectangles, dominated by shades of purple, blue, and green, creates a dynamic depth characteristic of the kinetic aesthetic of the 1970s. The precise and consistent wool work lends the piece a warm materiality that contrasts with the calculated coolness of the composition. An emblematic piece of modern French textile art, testifying to the dialogue

**Dealer**

**SHART ANTIK TAPIS**

Antique Carpets, Tapestries & Textiles

Mobile : 0617926662

10A rue de Sarraltroff

Reding 57445

between art, design, and exceptional  
craftsmanship. Size : 140 x 69 cmCondition :  
Very good condition.MY COMPLETE  
GALLERY