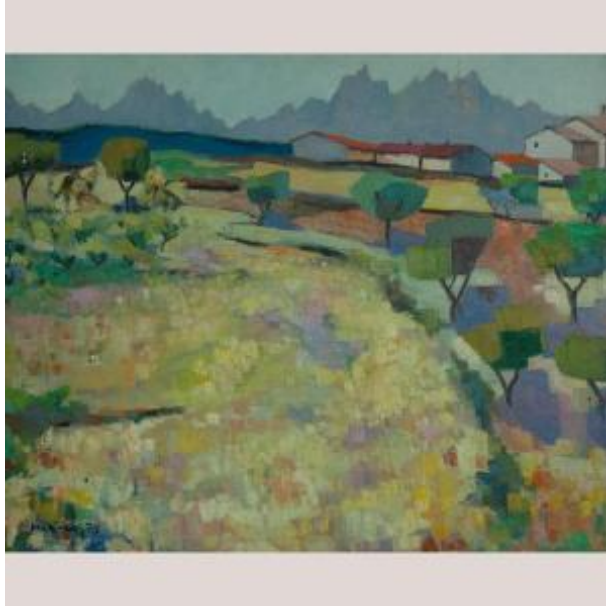




PROANTIC
LE PLUS BEAU CATALOGUE D'ANTIQUITES

Sant Salvador De Guardiola Landscape - Antoni March Salas



950 EUR

Signature : Antoni March

Period : 20th century

Condition : Bon état

Length : 74

Width : 87

Description

Antoni March's Sant Salvador de Guardiola captures a luminous Catalan countryside beneath the distinctive silhouette of the Montserrat mountains. Executed with a vibrant, mosaic-like brushwork that merges Post-Impressionist structure with Fauvist color, the scene radiates both harmony and rhythm. Patches of soft yellows, greens, lilacs, and blues create a gently undulating field that leads the eye toward a cluster of rural houses, their terracotta roofs glowing under the Mediterranean light. The artist's handling of paint--short, broken strokes and a thick impasto--reveals a confident control of tone and texture, balancing geometric precision with lyrical spontaneity. The overall mood is serene yet dynamic, suggesting both the order of cultivated land and the freedom of open air. This

Dealer

Art décoratif moderne de Barcelona Antiguedad
Art and Antiques

Tel : +34 932710836

Mobile : +1 929-207-4705

Carrer Lull 27

Barcelona 08005

work perfectly embodies the Catalan modernist tradition of landscape painting, where light and color become the true subjects of the composition. Artist Antoni March (b. Manresa, Spain) was active during the mid-20th century and is known for his colorful, structured interpretations of the Catalan landscape. Artist Details March's work reflects the rich heritage of Catalan Post-Impressionism, emphasizing light, structure, and color harmony. Based in Manresa, his paintings often depict rural scenes from central Catalonia, merging natural observation with modern stylistic abstraction. Movements Post-Impressionism Artist Influenced by Influenced by the work of Cézanne, André Derain, and the Catalan landscape painters of the early 20th century. Frame Condition Presented in a deep, black wooden frame with light wear on the edges consistent with age, complementing the bold chromatic composition of the painting. Packing, Shipping and insurance from Barcelona calculated at checkout. UK, EU, USA & Canada: EUR290 For all other destinations email: hi@moderndecorative.com For item purchase and better viewing. Click on the website link below: <https://moderndecorative.com/products/antoni-march-sant-salvador-de-guardiola-landscape-1973-original-painting> British dealer in Barcelona - moderndecorative.com