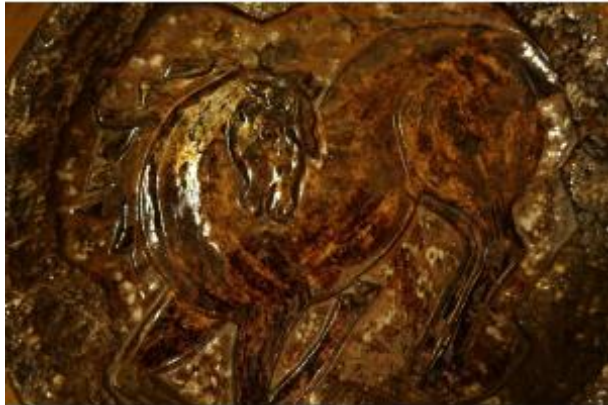




## Ceramic Dish Circa 1940

230 EUR



Period : 20th century

Condition : Etat d'usage

Material : Ceramic

Diameter : 37 cm

Height : 4 cm

### Description

Beautifully sized ceramic dish (diam; 37 cm) with a stylized rearing horse decoration. Beautiful contrast between the smooth, raised representation of the horse and the grainy edge. It is signed on the back A. KOSTANDA with the presence of two "Terre de Cluny" stamps. Alexandre KOSTANDA was born in Poland in 1924. He settled in Cluny and then in 1949 he moved to Vallauris. A few years later he opened his own workshop. The dish is located in Cluny. It can be dated to the 1940s. Note two restored but visible accidents on the edges of the dish (close-up photos). Shipping costs to France by Colissimo with tracking: EUR50 due to weight and fragility.

### Dealer

**Blandine Lefèvre**

Antiquités, Objets d'art

Tel : 01 42 46 40 95

Mobile : 06 26 94 00 58

sur Rendez-vous

Paris 75009