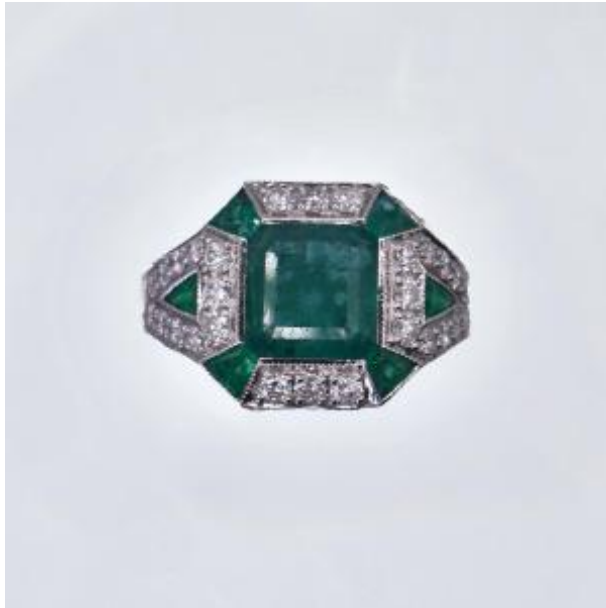




Rectangular Emerald Cut Ring With Diamonds



5 200 EUR

Period : 20th century

Condition : Parfait état

Material : Gold

Description

18ct white gold ring, decorated in the center with a square emerald with cut sides weighing approximately 3.50cts, in a surround of diamonds of approximately 0.80cts and trapezoidal emeralds, Art-deco style. Weight of the setting 6.10g Size adjustment -54

Dealer

EVALD

Bijoux Anciens

Mobile : 06 03 21 59 77

Lyon 69000