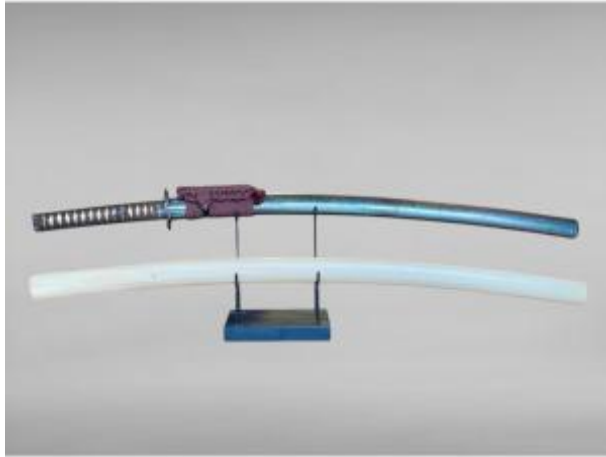




---

Japanese Katana Sword, Signed Kanekage, With Nbthk Certificate - Mid Edo Period.

7 800 EUR



Period : 18th century

Condition : Bon état

Material : Wrought iron

Length : 97 cm.

Height : 8 cm.

Depth : 7,5 cm.

Description

JAPAN - Early to mid Edo period (1615-1741).  
Samurai katana in shirasaya. FUSHI - KASHIRA  
in chased and patinated metal suite decorated  
with a butterfly (symbol of rebirth) with  
outstretched wings inlaid with copper and silver  
threads. TSUKA in wood covered with ray skin  
and brown silk braid. MENEKIS in chiseled,  
patinated copper depicting characters in  
profile. TSUBA moko-gata in openwork and  
silvered metal, the mimi hemmed, signed. SAYA  
in wood covered with a lacquer loaded with  
mother-of-pearl powder, it is decorated with a  
finely chiseled silver kojiri with a pattern of  
foaming waves. HABAKI double in smooth  
copper and decorated with vertical parallel  
striations. KOGAI simple in patinated copper, the  
ringed handle topped with interlacing faces

Dealer

**ANTIQUES YF**

Arts du samurai et Arts du Japon

Mobile : 0608649576

4 allée de pomone

Gressy 77410

(wear). Straight blade, regular hamon, straight and well marked, the tang pierced twice, signed by Kanekage. Sold with the stand, its silk case for transport and its NBTHK Hozon certificate. NBTHK also known as Nihon Bijutsu Touken Hozon Kyokai (the Society for the Preservation of Japanese Sword Art), is one of the oldest Japanese sword appraisal organizations in modern Japan. Dimensions: 97 x 8 x 7.5 cm. Edge length: 65.7 cm. Curvature (sori): 1.8 cm. Notes: This blade was signed by Mimasaka Koku Jyu Kanekage, a swordsmith active from the early Muromachi period to the Edo period. According to the NBTHK, this sword was forged in the Shinto period (early/mid Edo period). The name of the maker Mimasaka Jyu Kanekage endured for four generations during the Genna-Genbun era (1615-1741: early-mid Edo period). This lineage originally worked in Seki, Mino Province (present-day Gifu Prefecture), which was one of the most flourishing centers of swordsmithing at the time. However, some later generations of Kanekage moved to Mimasaka during the Edo period. The first-generation Kanekage in Mino Province was the son of Naoe Kaneyuki, who through Kaneuji was related to the lineage of the Masamune Jittetsu ("Ten Great Disciples of Masamune"). Accordingly, the first Kanekage belonged to the Naoe Shizu school, one of the renowned swordsmanship traditions in Mino Province. The name Kanekage was passed down from generation to generation. While many Seki swordsmiths changed their names upon entering the Shinto period (New Sword Era), Kanekage retained both his lineage and name, as well as his distinctive style, characterized by bold and powerful strokes.