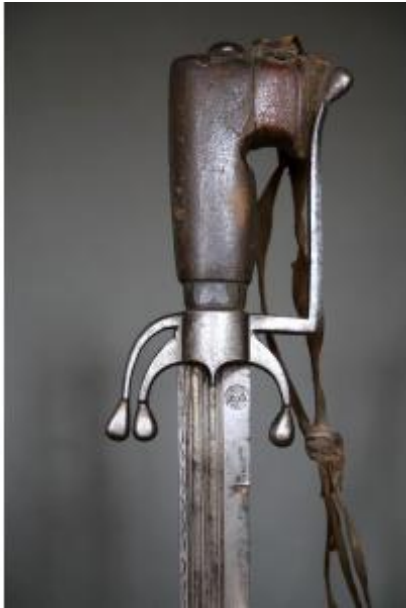




Moroccan Nimcha Saber With Strong European Blade - Morocco, 17th Century



1 300 EUR

Period : 17th century

Condition : Etat d'usage

Description

Moroccan nimcha saber with strong European blade - Morocco, 17th century Beautiful and strong European blade from the 17th century. Typical 17th century blade that is frequently found in Europe mounted on Italian Schiavonas, Scottish swords to Hungarian and Polish palash. Blades visibly heavily exported and prized in the Maghreb because they are frequently found mounted on 17th century nimchas. At the ricasso, presence of an Arab workshop mark. Probably the workshop that mounted the blade on the horn handle. Probably Italian blade in view of the common serrated eyelashes below the back of the blade. Straight single-edged blade and counter-edged on the last third. Horn handle. Missing the ferrule at the bottom of the handle. Total length 103.5cm Blade length 88cm Weight

Dealer

Galerie Mathieu

Antiquités, armes et art extra-Européens

Châteauneuf-sur-Charente 16120

1019gr