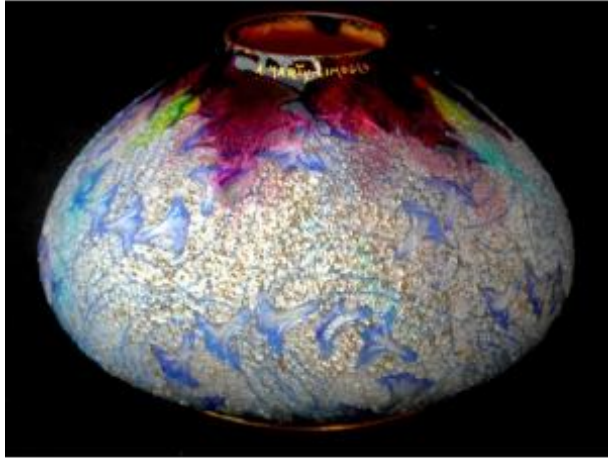




Limoges Enamel Spinning Top Vase With Bindweed Decoration By A. Marty, Faure Art-deco Era

550 EUR



Signature : Alexandre MARTY

Period : 20th century

Condition : Très bon état

Material : Enamel

Diameter : 12 cm

Description

Charming spinning top-shaped vase in enamel on copper and decorated with bindweeds by Alexandre Marty (1876-1943). Very original piece with this rotating decoration with fine purple bindweeds which winds all over the vase. A few touches of color on the part and the neck enhance the whole. It rests on a small brass base. Signed on the neck "A. MARTY Limoges". Alexandre Marty was Camille Faure's collaborator between 1919 and 1924, in this period of art deco in the workshops named "Faure-Marty". 12 cm in diameter, very good condition, circa 1920. Very beautiful art deco piece, unusual decoration.

Dealer

Nancyartpassion

art-déco, art-nouveau, école de Nancy

Mobile : 0682060732 , par sms en 1er contact

Essey-lès-Nancy 54270