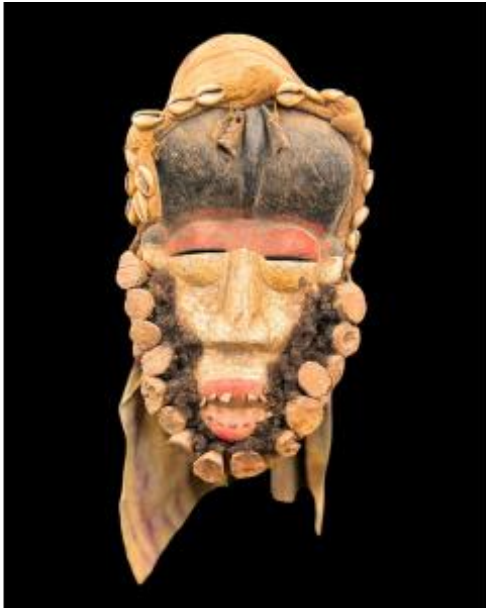




## Guéré (wé) Ritual Mask - Ivory Coast / Liberia



1 850 EUR

Period : 20th century

Condition : Bon état

Width : 21 cm

Height : 34 cm

### Description

Spectacular mask with an expressive face, surrounded by a beard of wood and fibers, topped with a textile headdress decorated with cowrie shells. It comes from the Guéré people (Wé group), settled in the west of Ivory Coast and the south-east of Liberia. These masks were used in powerful ritual contexts: customary justice, village protection, initiation ceremonies. The mixture of materials (wood, textile, shells, pigments) reinforces their visual and symbolic power, and links them to feared and respected bush spirits. Each element has a specific function: to impress, to mask the identity of the wearer and to embody invisible forces.

### Dealer

**Espace des Particuliers**

Generalist

Tel : 0146323332

Mobile : 0609614713

333 av Général de Gaulle

Clamart 92140