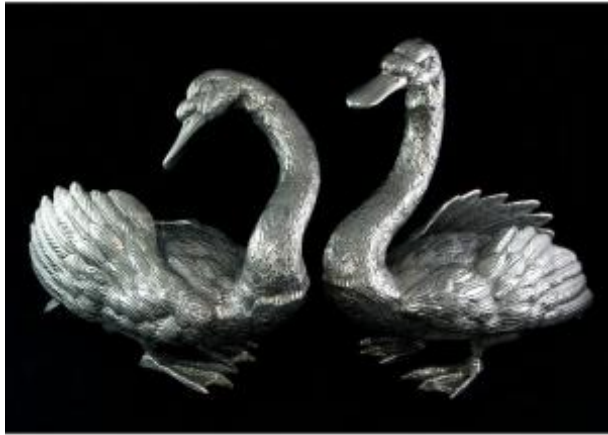




Important Pair Of Table Sculptures Depicting A Swan Couple

450 EUR



Period : 20th century

Condition : Bon état

Length : 23,5 cm

Width : 8,5 cm

Height : 21,5 cm

Description

An elegant pair of decorative bronze sculptures with a silvered patina, depicting a swan couple in a harmonious and graceful posture. Each bird is rendered with great attention to detail, from the finely worked plumage to the naturalistic modelling of the neck, beak, and webbed feet. The feathers are delicately defined, creating a refined texture that subtly catches the light. The complementary positioning of the swans--one facing left, the other right--suggests a moment of tenderness or quiet elegance, lending the ensemble a strong sculptural presence. These sculptures are designed to adorn a large table or console, bringing a classic and decorative touch to an elegant interior. Stamped ITALY under the feet, indicating Italian production, likely from the second half of the 20th century, in the tradition of

Dealer

Jamez Fine Arts

18th century furniture and objets d'art - Silverware and goldsmithing

Mobile : 06 62 59 77 70

Paris 75016

fine decorative bronze work. Dimensions Height:
21.5 × Length: 23.5 × Width: 8.5 cm Height: 18.5
× Length: 23 × Width: 8.5 cm Gross weight 2.043
kg 1.939 kg Condition report Very good overall
condition. Even patina, with no losses or visible
restorations.