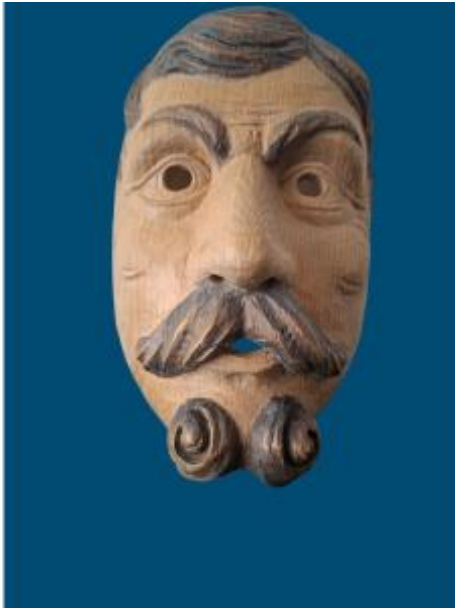




Bavarian Wood Carving Carnival Mask.



225 EUR

Period : 20th century

Condition : Parfait état

Material : Solid wood

Width : 16cm

Height : 26cm

Depth : 11 cm

Description

The Maschera Parade is a highlight of Carnival (Fashing) with roots dating back over 500 years. This traditional event features twelve "Schellenruehrer" (bell ringers) dressed in spooky costumes and hand-carved wooden masks, each symbolizing a month of the year. Carrying heavy cowbells, they parade through the streets accompanied by whip performers called "Goaslschnalzer" and beggars called "Pfannenziacher." Together, these performers form a vibrant procession meant to chase away winter and awaken the spirit of spring. The intricate masks and costumes passed down from generation to generation add a unique and authentic touch to this centuries-old tradition. The creator of this mask is no longer with us, so it is unknown which month he intended to illustrate

Dealer

Complément d'objets

sciences, ethnical, naturalia, artificialia, didactical items, curiosities

Tel :

Mobile : 00 32 477 450 595

Wemmel 1780

with his sculpture, never worn, which adorned the walls of his studio in Steingaden.