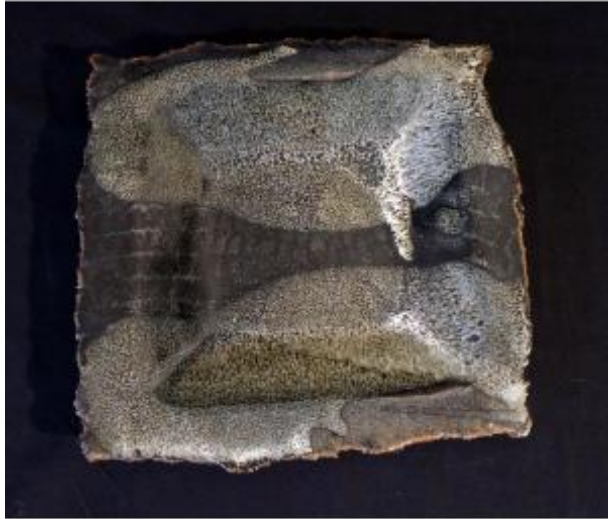




Claude Champy Signed Dish In Glazed Stoneware With Free Edges, Late 20th Century



800 EUR

Signature : Claude Champy

Period : 20th century

Condition : Parfait état

Material : Sandstone

Length : 28 cm

Width : 28 cm

Description

A square-shaped stoneware dish with irregular edges, featuring highly textured glaze work combining matte and glossy effects, in shades ranging from beige to black with areas of vitrified drips. The abstract decoration and high-temperature firing highlight the organic approach of Claude Champy, winner of the Grand Prix at the Biennale Internationale de Vallauris in 1982.

Dealer

Galerie Duvert

Contemporary art, antiques, ceramics, ancient and art books.

Mobile : 0612239716

Place du Champ de Mars

Crest 26400