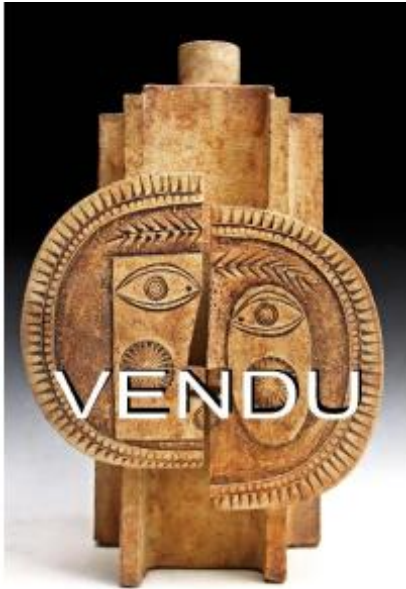




Roger Capron (1922-2006) & Jean Derval (1925 - 2010) Large Model



4 900 EUR

Signature : Roger CAPRON (1922-2006) & Jean DERVAL (1925 - 2010)

Period : 20th century

Condition : Très bon état

Material : Ceramic

Description

Roger CAPRON (1922-2006) and Jean DERVAL (1925 - 2010) Rare and important ceramic sculpture stamped from the workshop -Capron in Vallauris- representing the largest model of chamotte earthenware vase lamp animated by an incised decoration with cubist figures forming a sun inscribed on an architectural upright. This sculptural lamp is the fruit of the collaboration between two major artists of the revival of ceramics in Vallauris in the 50s: Jean Derval and Roger Capron. Traditionally comes from a commission for the decoration of the Byblos Hotel and La Pinède in Saint-Tropez. Very good condition, dimensions excluding lampshade: 42 cm high X 28 cm wide X 18 cm.

Dealer

Galerie Tramway

marchand d'art, gestion du patrimoine

Mobile : 06.65.52.05.40

D-751

Amboise 37400