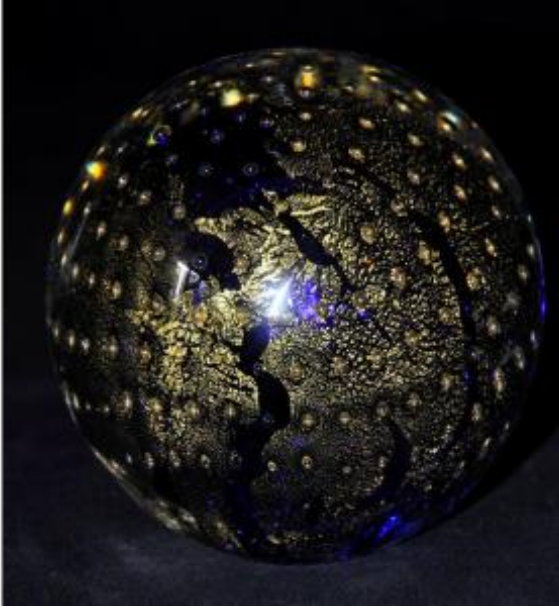




## Heavy Glass Paperweight (murano) With Gold Leaf Decoration.



300 EUR

Signature : Murano

Period : 20th century

Condition : Parfait état

Material : Glass

Diameter : 11 cm

### Description

Solid glass sulphide-type paperweight, adorned with gold leaf inclusions and a perfectly regular network of bubbles. The work evokes the artisanal productions of Murano in the 20th century, although unsigned. Dark hue with deep bluish reflections.

### Dealer

#### Galerie Duvert

Contemporary art, antiques, ceramics, ancient and art books.

Mobile : 0778556114

Place du Champ de Mars

Crest 26400