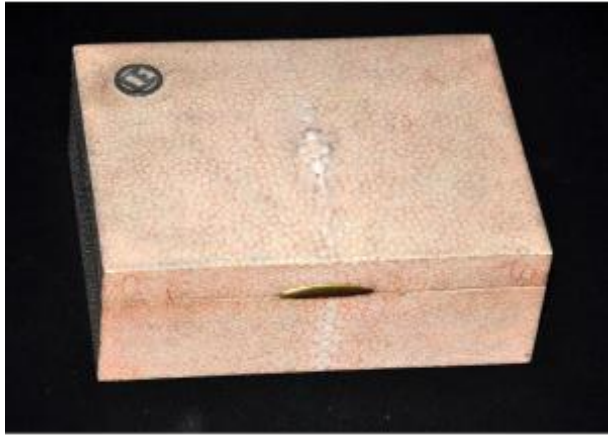




## Box Covered In Galuchat Attributed To Clément Rousseau Circa 1930

600 EUR



Period : 20th century

Condition : Parfait état

Material : Shagreen

Length : 13,5 cm

Width : 10,5 cm

### Description

This shagreen-covered box, created in the 1930s, is a fine example of the appreciation for refined materials that characterizes Art Deco and fits perfectly within the aesthetic dear to Clément Rousseau. At the time, shagreen experienced a true surge in popularity, particularly in luxury leather goods and silversmithing. Valued for its unique texture, it offers a slightly grainy feel due to the tiny natural beads that compose it, along with a subtly lustrous finish that elegantly catches the light. Its exceptional durability and flexibility made it a material of choice for precious objects, combining both aesthetics and longevity. Attributed to Clément Rousseau, this box embodies an approach where the combination of noble materials and meticulous attention to detail come together to create pieces

### Dealer

**Galerie Duvert**

Contemporary art, antiques, ceramics, ancient and art books.

Mobile : 0778556114

Place du Champ de Mars

Crest 26400

that are both understated and luxurious. On the lid, a silver monogram indicates ownership, likely belonging to a family or a distinguished house. Its clean, geometric design reflects the Art Deco spirit, where elegance lies in the simplicity of forms and the quality of craftsmanship. The box opens via a delicately integrated brass handle, subtly contrasting with the texture of the shagreen. The piece remains in perfect condition, a testament to the care taken in both its craftsmanship and preservation.40