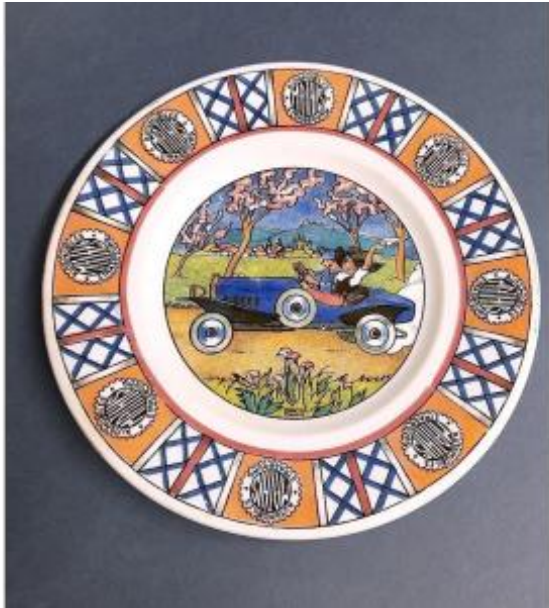




PROANTIC
LE PLUS BEAU CATALOGUE D'ANTIQUITES

Sarreguemines, Small Plate Mathis, Alsace, Automobile, Dorette Muller, Advertising,



180 EUR

Signature : Dorette Muller

Period : 20th century

Condition : Très bon état

Material : Earthenware

Diameter : 16 cm

Description

From the collaboration between the Alsatian car manufacturer Émile Mathis and the Sarreguemines earthenware factory, we have 9 advertising vignettes affixed to plates.

This production, which dates from the 1920s and 1930s, a period that marked the return of Alsace-Moselle to France after a long and painful separation (1871-1918), is illustrated by images characteristic of Alsace: headdresses and costumes, half-timbered houses, storks' nests, geese, Strasbourg Cathedral, etc.

This identity is reinforced by the choice of artists who contributed to part of this iconography: Dorette Muller and Henri Zislin, two Alsatian artists whose works are still highly sought after today.

The 9 vignettes are affixed mainly to plates of

Dealer

Antiquités Alain Benedick

Faïences, Bibelots, Sarreguemines, Longwy, curiosités

Tel : 03 87 07 56 68

Mobile : 06 80 22 38 60

38, rue Principale

Postroff 57930

two sizes: 21.5 cm, more rarely 16 cm in diameter.

The small plate that we are offering you is called by collectors "The Alsatian and the soldier".

The vignette in the basin shows an Alsatian woman and a soldier in a Mathis car on a country road.

The rim is decorated with the Automobile Mathis Strasbourg logo alternating with crosspieces.

This decoration is signed Dorette Muller.

Diameter - 16 cm

Printed stamp Sarreguemines DV France.

Good condition.

Circa 1921-23.