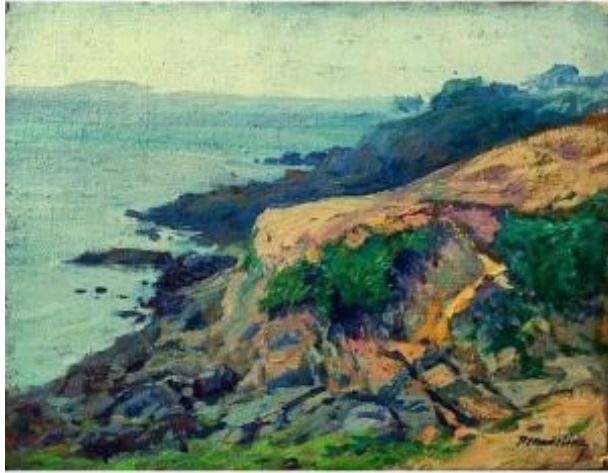




PROANTIC
LE PLUS BEAU CATALOGUE D'ANTIQUITES

Paul Madeline (1863-1920) Brittany Coast 1907. Douarnenez, Le Trieux. Crozant School, Maufra

3 480 EUR



Signature : Paul Madeline (1863-1920)

Period : 20th century

Condition : Parfait état

Material : Oil painting

Length : 35

Height : 27

Description

New superb oil/canvas by Paul Madeline representing a Breton coast in 1907, signed at the bottom right by his hand and not with the studio stamp as is often the case + indications on the back that I could not decipher except for the date 1907. Size of the canvas alone 27x35cm This is therefore a magnificent post-impressionist composition by Paul Madeline, who here paints one of his favorite subjects, Brittany. It is either a coast towards Douarnenez which I think is most likely, or towards Le Trieux, the two places where he painted the most. True to his technique, he uses a very impressionist touch, plays with the medium by leaving very subtle reserves and of course uses his palette which has largely made his success, thanks to his famous purples, mauves, intense blues, greens and ochre/beige, critics

Dealer

Galerie Laurent Goudard

Tableaux 19ème et Modernes, Spécialiste de l'Ecole de Crozant

Tel : 0555 333 777

Mobile : 06 22 24 11 48

12 rue Delescluze

Limoges 87000

admit him as one of the best colorists of his generation. Beautiful work by one of the greatest French post-impressionists who very often competes with Guillaumin, Detroy, Maufra or Moret. Because today Paul Madeline is as much part of the masters of the Breton school alongside Moret, Maufra, Delavallée, Legoùt-Gérard.... as he is of the masters of the Creuse valley alongside Guillaumin, Detroy, Alfred Smith or Alluaud. Paul Madeline was born in Paris on October 7, 1863. A student at the École des Beaux-Arts in Paris, he worked in a publishing house to earn a living and painted urban landscapes in his free time. In 1894, he discovered the Creuse - a charming countryside in the Limousin - following a meeting with Maurice Rollinat and Léon Detroy at a mutual friend's house. He exhibited at the Salon des artistes français in 1894, 1897 and 1899. Later, he was appointed a permanent member of the Salon d'Automne, as well as the Salon de la Nationale des Beaux-Arts. Then came great success for him. He devoted himself entirely to painting and came to the Creuse several months a year, usually in the fall. A major figure among the painters of the Creuse, Paul Madeline is, like Alluaud, one of Armand Guillaumin's emulators, drawing inspiration from his palette and technique. But conversely, many other artists were inspired by him, including Clémentine Ballot, perhaps the one who came closest to the master. In 1908, he founded "La Société Moderne", which included painters such as Lebasque, Raffaëlli, Aman and Maurice Chabas. The Devambez gallery and Durand-Ruel were invited to their annual exhibitions. Madeline travelled a lot in the 1910s and towards the end of his career, he introduced certain characters in his landscapes, wearing regional costumes, in particular from Brittany, his second favourite region where he loved to go as much as to Creuse, especially in the counties of Douarnenez, Diben and the island of Bréhat. He also went to Corrèze, Alsace during the Great War, Périgord and the South, particularly towards Agay. The

Salon des Indépendants devoted a retrospective to him in 1926, 6 years after his early death. Today his works are highly sought after by art lovers all over the world, some of them sell for more than EUR20,000 and even more! This painting is in perfect condition, currently presented without a frame but I will try to find one for him, it is a very standard format. Guaranteed authentic work
PS: I am offering a 2nd painting by Madeline, go see my ads...