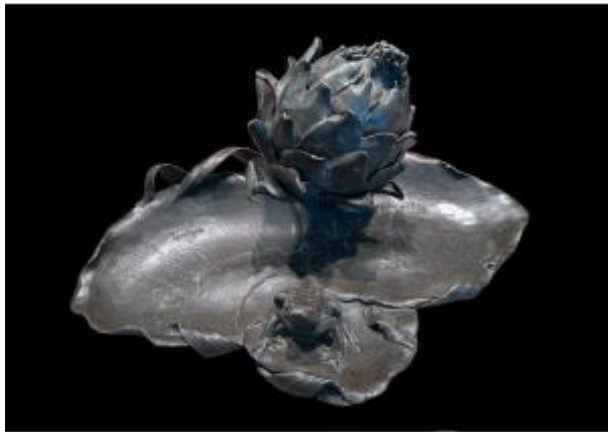




## Art Nouveau Inkwell Unique Piece Compagnie Des Bronzes Bruxelles

850 EUR



Signature : Inconnu

Period : 20th century

Condition : Bon état

Material : Lead

Length : 26.5cm

Height : 13cm

Depth : 20m

### Description

Superb art nouveau inkwell mixture of tin and lead. With a dedication to my friend Arthur Brichaux. Unique piece from the Brussels bronze company. It bears the date 1899. The Company will occupy a growing market niche, the foundry of bronze monuments, and thereby reach a very specific clientele: sculptors who most often serve as contact persons. It was probably at their request that the Compagnie des Bronzes reintroduced the technique of lost wax casting in Belgium in the early 1880s. Monumental bronzes: In the 19th century, statuary occupied an increasingly large place in the planning of urban space: fountains, squares and public gardens. In Belgium, this "statuomania" takes on the overtones of a history lesson. The young nation, which must consolidate its identity, multiplies the

### Dealer

**Au Fil du Temps Belgium**

Sculptures paintings Ceramics Porcelains Furniture Expertises

Tel : +32 25133487

Mobile : +32 475263487

Chaussee d'Alseberg 895 bt6

Uccle 1180

representations of the national past, embodied in  
heroes like John Cockerill. The company will  
quickly invest in this new sector. The list of