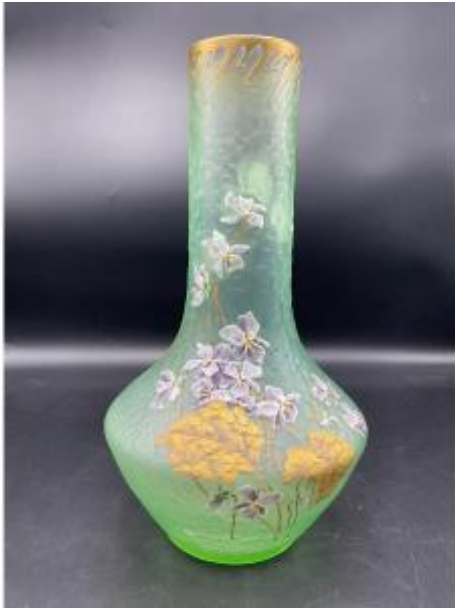




## Legras Vase Decorated With Enamelled Violet And Foliage Enhanced With Gold Signed Montjoye On



880 EUR

Period : 19th century

Condition : Très bon état

Material : Glass

Width : 15,6 cm.

Diameter : du col: 6,4 cm. de la base: 9,3 cm.

Height : 30 cm.

Depth : 15,6 cm.

### Description

- Legras vase of conical shape with flattened base and straight glass neck with rotating decoration enameled with violet flowers, violet stems and foliage enhanced with gold and acid-etched on a light water green granite background. - Collar enhanced with gold comma. - Signed in gold under the base with the bishop's head and the mention Montjoye and the initials L&C for Legras et Cie. - Period late 19th early 20th century around 1895-1915.

### Dealer

**Pineaud gil**

Faïence,porcelaine,bronze,horlogerie,verrerie,objets de vitrine.

Tel : 06 77 03 19 70

38 rue waldeck rousseau

Lyon 69006