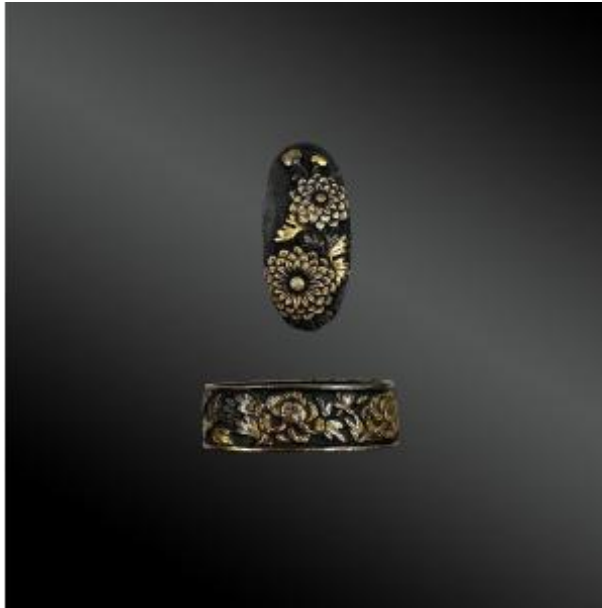




Fuchi Kashira, With The Pattern Of The Peony In Bloom. Japan - Edo Period (1603 - 1868), 19th Century



180 EUR

Period : 19th century

Condition : Bon état

Material : Other

Description

FUCHI KASHIRA, with peony in bloom design.
JAPAN - EDO period (1603 - 1868), 19th century
Iron and alloy
H: 3.7cm for the fuchi and 3.4cm for the kashira

In shakudo with inlaid gilded copper decoration, featuring a peony in bloom.
Unsigned.

Good condition.

Reference : 4404

Text and photos © FCP CORIDON

Dealer

Galerie FCP Coridon

Old weapons and cutlery. Tribal Arts. Objects of curiosities

Tel : 06 81 15 31 79

Mobile : 06 75 98 11 19

110 rue des rosiers

Saint-Ouen 93400