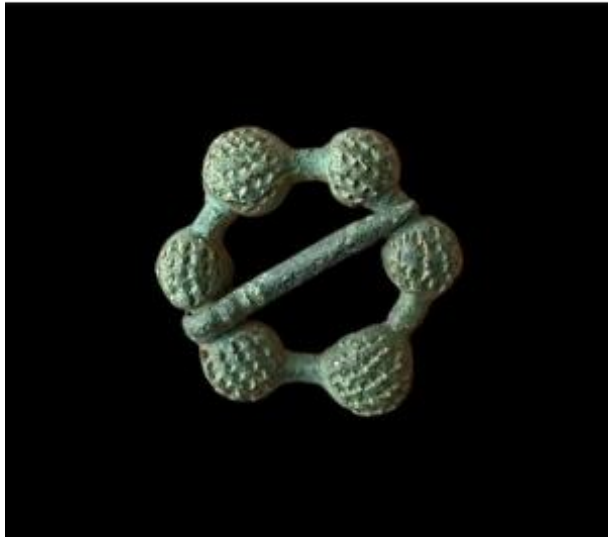




A Medieval Annular Brooch With 6 Hemispherical Bosses, 13th-14th Century



150 EUR

Period : Before 16th century

Condition : Très bon état

Material : Bronze

Diameter : 15,5-17 mm.

Description

A annular brooch ring linking 6 integral hemispherical bosses each decorated with multiple rounded indentations. Tapering D-section pin with 3 transverse grooves near the loop. Very good condition Diameter: 15,5-17 m.m.

Dealer

Wonders are Collectible

Sculptures & Works of Art

Mobile : 00 31 653179741

Utrecht 3701EV