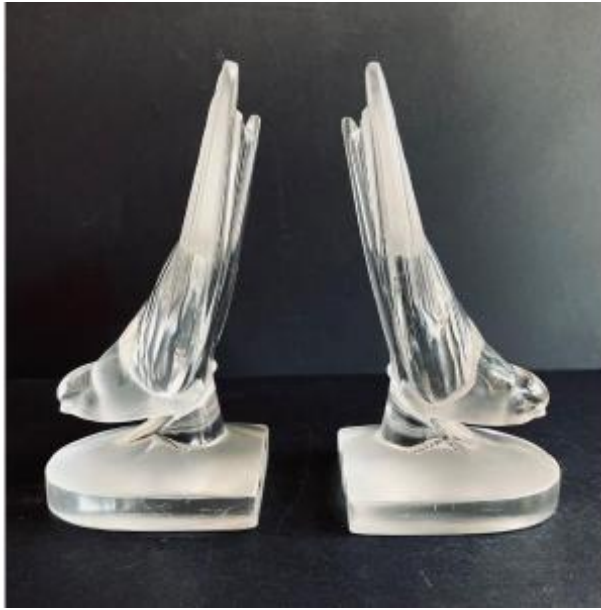




PROANTIC
LE PLUS BEAU CATALOGUE D'ANTIQUITES

Pair Of "swallow" Bookends Lalique France



650 EUR

Signature : René Lalique

Period : 20th century

Condition : Très bon état

Material : Crystal

Width : 10cm

Height : 16cm

Description

Pair of bookends in pressed molded white glass, partially satin-finished, signed "Lalique France". "Swallow" model created in 1942 and reproduced in the bibliography of R. Lalique by Félix Marchilhac, les éditions de l'amateur page 509 N°1143/B.

Very good condition

Height 16cm, width 10cm

Lalique France signature engraved under each piece.

LALIQUE René (1860-1945)

A great designer of art nouveau jewelry, Lalique also set up a glassmaking workshop in 1890. In 1895, his perfume bottles entered the collections of the Museum of Decorative Arts. In the 1920s, master glassmaker Lalique turned to Art Deco and combined luxury and everyday aesthetics by

Dealer

Cornershop Design

20th Century Design

Tel : 0622750609

Mobile : +33 (0) 622750609

Paris 75004

creating everyday objects - vases, candlesticks,
cups and... car cabochons! After his
disappearance, his son Marc continued the
adventure and started crystal work. The
"trademark" is still today the symbol of creativity
combined with quality.