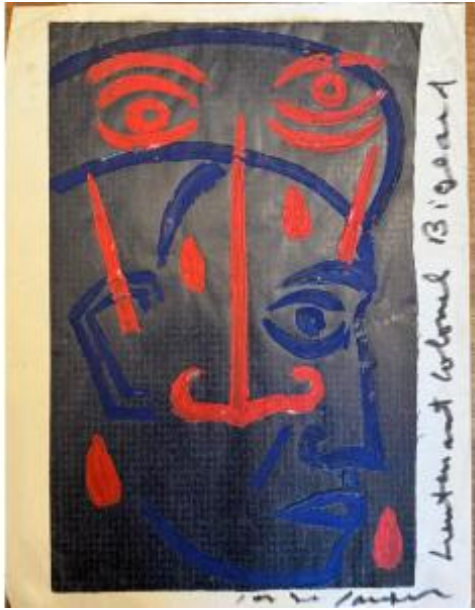




Sauphar Serge 1922 - 1987. Portrait Of Marcel Bigeard



5 000 EUR

Signature : Sauphar Serge 1922 - 1987

Period : 20th century

Condition : En l'etat

Material : Paper

Width : 20

Height : 27

Description

Serge Sauphar (1922-1987) Portrait of General Marcel Bigeard Art Brut Work Created during his internment, this work demonstrates the expressive power and fragmented vision of Serge Sauphar, a self-taught artist associated with Art Brut. Born in 1922, Sauphar demonstrated a taste for drawing and intuitive creation at an early age. In 1948, at the age of twenty-six, he was interned at Ville-Évrard for a period of wandering and confusion. He remained there for six years in Dr. Dublineau's ward before being transferred to Esquirol Hospital in Saint-Maurice, in the ward of Professor Baruk, who was succeeded by Professor Lantéri-Laura. Sauphar died there in 1987, after nearly forty years of uninterrupted hospitalization, during which time he was known to all who came into contact with him as "the

Dealer

Le Printemps des Siècles

Antiquaire Généraliste

Mobile : 0607679767

9 Boulevard Miredames

Castres 81100

painter." He had managed to create his own studio inside the hospital, where he worked tirelessly. He received passing visitors, to whom he often offered works, even art books, convinced that art would be the redemption of the world. His work is part of a process of mental reconstruction as much as a quest for identity. Entitled Portrait of General Marcel Bigeard, the piece goes far beyond the simple representation of a famous soldier to become a mental image, an inner projection of the authority figure. The general's face emerges from superimposed features and profiles, as if several identities coexisted or merged. This layering of the drawing reflects a tension between admiration, memory, and psychological turmoil: the artist seems to be exploring the limits of the human figure and power. The subject of the portrait, General Marcel Bigeard (1916-2010), was an emblematic figure of the 20th-century French army. A volunteer in 1936, a member of the Resistance during the Second World War, and then a parachute officer in Indochina and Algeria, he became synonymous with courage, discipline, and energy. His public image, authoritarian and heroic, profoundly marked the post-war collective imagination, which is undoubtedly one of the reasons why Sauphar, in his closed universe, chose to confront it, transforming the figure of the military leader into an interior and hallucinatory icon.