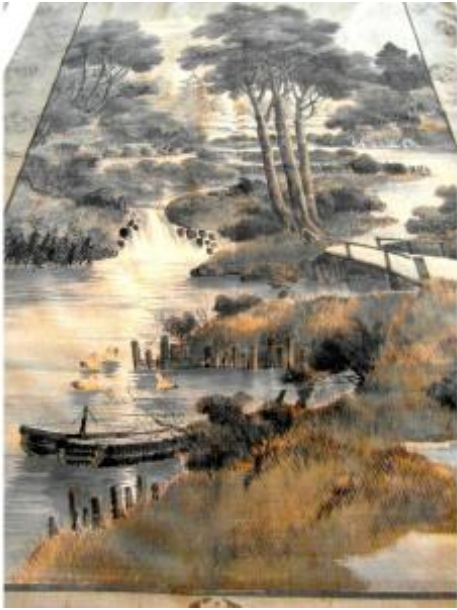




Sublime Large Japanese Wall Hanging 19th "riverside With Pagoda" Era 1900 Daum Meiji



790 EUR

Period : 19th century

Condition : Bon état

Material : Linen

Length : 140 cm

Width : 87 cm

Description

beautiful large Japanese hanging or fabric painting of a lake scene, circa 1860-1880. Truly a sublime piece for this Japanese hanging with a rich and fine lake setting with a large pagoda house in the background on a rising moon. Large trees, streams, bridges and many other details for this truly remarkable canvas...I'll let you judge with these numerous photos. Large size: 140 cm by 87 cm, signature at the bottom right, lined with a pretty fabric at the back. Very good condition, no tears or pronounced wear but a few water stains related to the age of the piece. I did not dare to undertake a restoration, the piece is already so beautiful as it is... but it is up to the buyer, certainly possible to optimize if that is your wish. A truly remarkable piece? on a beautiful wall, what a treat!

Dealer

Nancyartpassion

art-déco, art-nouveau, école de Nancy

Mobile : 0682060732 , par sms en 1er contact

Essey-lès-Nancy 54270