



Pair Of Small Cartier Frames, 20th Century

350 EUR

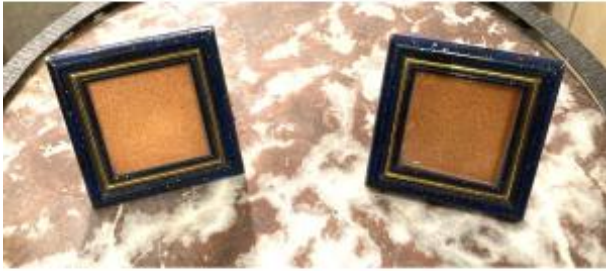
Period : 20th century

Condition : En l'etat

Material : Brass

Length : 7,4 cm

Width : 7,4 cm



Description

Pair of small square brass frames painted lapis lazuli blue. Le must de Cartier, Paris. Slightly missing paint (see photos). A decorative element screwed onto one of the frames is missing (lower left, see photo).

As is
20th

Dimensions :
7.4 x 7.4 cm

Dealer

Petit Antiquités

French antiques in Paris

Tel : 01 42 93 05 75 ou 01 45 04 46 54 ou 01 45 20 54 44

Mobile : 06 03 00 39 83

38 rue des Batignolles

Paris 75017