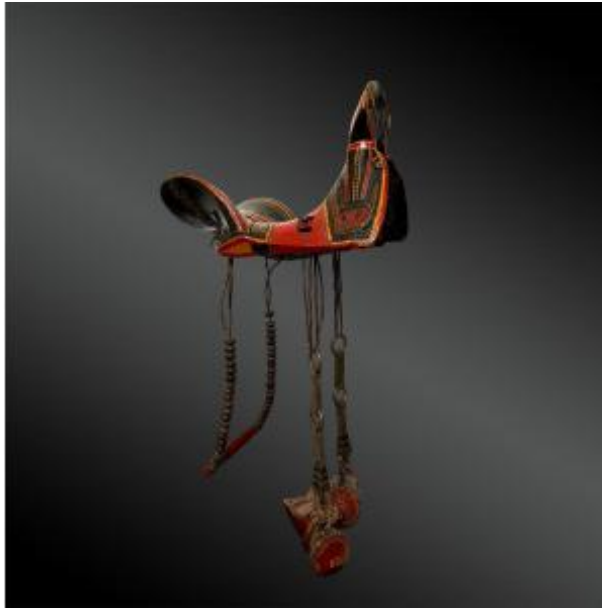




Saddle Horse Harness - South China - Late 19th Century - Early 20th Century



2 280 EUR

Period : 20th century

Condition : Bon état

Material : Other

Description

Saddle horse harnessing

Yi culture, also known as Lolo, Yunnan province, southern China

Qing Dynasty (1644-1912), late 19th - early 20th century

Wood, leather, fabric, lacquer, pigments and brass

H. 84 cm, 43 cm long, 25 cm long
(age wear)

Carved and lacquered wooden saddle, decorated with stylised flowers and dotted motifs, drawn in yellow and red ochre on a black background. It is fitted with a sewn leather sheath, a pair of carved wooden stirrups suspended from leather straps with chased brass fittings and decorated in suite, and a leather girth embellished with large wooden

Dealer

Galerie FCP Coridon

Old weapons and cutlery. Tribal Arts. Objects of curiosities

Tel : 06 81 15 31 79

Mobile : 06 75 98 11 19

110 rue des rosiers

Saint-Ouen 93400

beads.

Text and photos © FCP CORIDON

Ref LP : 3315