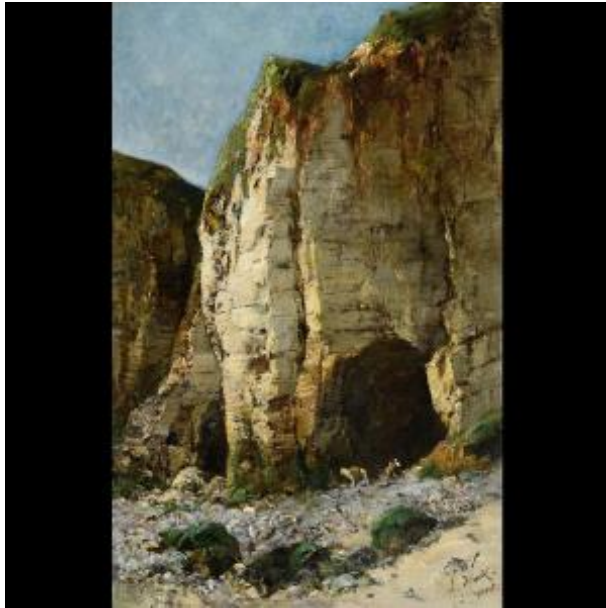




PROANTIC
LE PLUS BEAU CATALOGUE D'ANTIQUITES

Alexandre Defaux (1826-1900) Yport The Cliff Of Upstream Normandy



4 800 EUR

Signature : Alexandre Defaux

Period : 19th century

Condition : Parfait état

Material : Oil painting on wood

Length : 59,5 cm hors cadre

Width : 38,5 cm hors cadre

Description

Alexandre DEFAUX
(1826, Bercy - 1900, Melun)
Yport, la falaise d'Amont
Oil on panel
59.5 x 38.5 cm
Signed and located lower right

Pupil of Corot, Alexandre Defaux is a fairly famous painter from Barbados, in particular known for its rustic scenes of sunny backyards or flowering orchards, as well as for its views of the forest of Fontainebleau. But he also produced views of Normandy (Seine-Maritime, Calvados, Manche), such as a View taken in Caen exhibited at the Salon of 1859 or a View taken in Puys; surroundings of Dieppe, exhibited at the Salon of 1866. The artist had a studio with a view

Dealer

Galerie de Frise
Specialist in ancient paintings
Mobile : 06 77 36 95 10

Saint-Julien-de-Crempse 24140

overlooking the sea in Puys, a small seaside resort near Dieppe, where Alexandre Dumas fils had a house built. The abundant production of Defaux offers the best and the worst; but we are here in the presence of a magnificent painting, mineral at will, and a striking relief, where the artist appears very close to Courbet. Located in the country of Caux between Etretat and Fécamp, the village of Yport developed in the 19th century thanks to fishing and sea bathing tourism; it was a very popular site for painters, both in the 19th and 20th centuries.

Sold with its original frame in perfect condition.