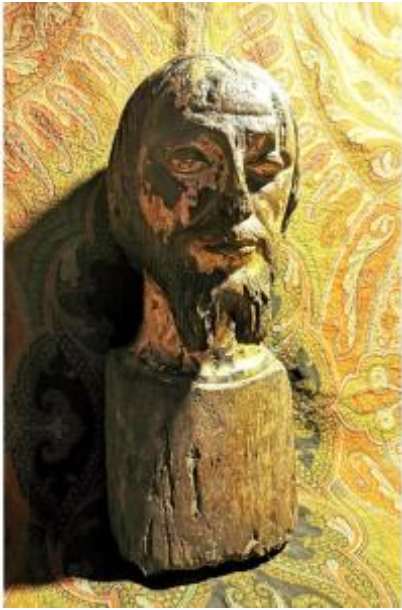




Ancient Late Gothic Sculpture - Bust / Religious Head - Late 15th Century, Renaissance



4 200 EUR

Signature : Maître sculpteur

Period : Before 16th century

Condition : En l'etat

Material : Solid wood

Width : 19cm

Height : 46 cm

Depth : 19 cm

Description

Bust of a Man Late 15th - Early 16th Century, Sculpture in Oak with Traces of PolychromyRare sculpture of a man's head in dense oak, dated from the end of the 15th century (around 1490-1510), a pivotal period in the transition between the flamboyant Gothic style and the Renaissance, influenced by Italian art. This bust of a man with a serene face, perhaps an apostle, a notable or Christ, presents meticulous and expressive work, typical of sculptors of the late Gothic period. The wavy texture of the hair and beard, the marked eyebrow arches, as well as the realistic depth of the facial features testify to the progressive humanization of faces in the statuary of the late Middle Ages, where more attention was given to pay attention to individuality. . in sculpture, and in realism too.An expertise from

Dealer

Galerie David SEGALA

Dealer specialized in art objects

Tel : 0466477424

Mobile : 0680322750

3 Rue Fontanilles B-f6

Mende 48000

the Parisian laboratory Xylo-Data S.A.R.L.,
carried out by Dr Victoria Asensi Amoros,
specialist in wood micrography, confirms the
geographical origin of the tree in the Meuse and
dates this work between the end of the 15th and
the beginning of the 16th century. century . The
study report dated 06/23/2024 will be provided
with the sculpture.State of conservation:Some
discreet gaps on the face and traces of
xylophagous attacks, slight retouching on the
base. These imperfections do not detract from the
artistic appeal of the work; on the contrary, they
highlight his journey through the ages, witnessing
the troubles of history, including wars and
revolutionary revolts.Dimensions:- Total height:
46 cm- Base width: 19 cm- Head dimensions:
width 17 cm x depth 19 cm- Weight: 4.6 kgA rare
work, steeped in history, which illustrates the
artistic evolution between Gothic and
Renaissance.Ideal for a passionate collector or as
a centerpiece in the decoration of an interior,this
sculpture alone embodies the essence of the
artistic transition to the Renaissance. Its calm
expression and the finesse of its details make it a
fascinating art object, which captures the
attention and adds a unique historical depth.
Installed in a library, a living room or an office, it
will bring a prestigious character and an aura of
authenticity, enriching your space with a rare
work steeped in history. - General conditions of
sale - If possible, Payment should be made (+ or
-) 2/3 days after the order. 1st - 4 - Types of
Payment accepted: (+ Transport-packaging costs
depending on the area).(1) - PAYPAL: Simple,
Fast, Guarantee and insurance.(2) - TRANSFER:
Iban Bank: BPS FR76 1660 7002 7109 3346
0201 534. (recommend)(3) - CHECK: Only
French: ANTIQUE DEALER David SEGALA 3
Rue Fontanilles Bat f6 48000
MENDE-Occitanie. (4) - CASH: Advisor by
hand, shipments are always at your own risk, we
will not accept any complaints. - 5 packaging
costs + transport :(a) France : EUR80(b) EU
Union, Switzerland : EUR90(c) Eastern Europe

(outside the EU and Switzerland), Norway,
Maghreb : EUR120(d) Africa excluding
Maghreb, Canada, United States, Near and
Middle East : EUR130(e) Asia, Oceania, Rest of
the World : EUR150 2nd - 2 types of
Shipping-Delivery possible: 1st) - By Carriers:
DHL, Colissimo, Poste... (always with Tracking
Number) (The packages are always
packaged by me (with Care and Overprotection)
and entrusted to the carrier at (+ or -) 3/4 working
days after payment into my account of the total
with costs, Any customs duties requested by the
country from the customer upon arrival are due
by the buyer. 2nd) - 3 Possibilities of personal
delivery subject to collection in full or payment
of Deposit. (issue of an essential receipt by
return email and must be given upon delivery or
collection). (1) - Welcome you with joy
to MENDE in LOZERE-Occitanie-France for a
little stroll and collect your property (no fees). (2)
- For Merchants only I am on the
Inter-Nations-Professional Bimonthly
Unpackings of CIPOLAT-S.A. in Montpellier
Parcs des Expositions HALL-B4
STAND-5315/16. (Items can be collected from
my stand 5315/16 before noon) no charge. (3) -
Possibility of possible delivery: by us in France
and neighboring countries on request and delivery
of movable objects in person, only for important
and very fragile pieces. (and according to our
availability and payment in full and in advance:
price + transport). - Possible Discount:
Discount granted to the Good customer or for a
lot: on request by SMS message: 0680322750 or
email: segala.david.antiquaire48000@orange.fr

Yours sincerely David

SEGALA