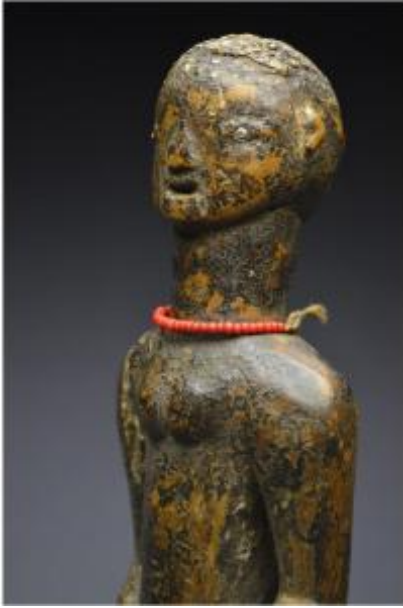




---

Tanzania, Nyamwezi People, First Half Of The 20th Century, Ancient Anthropomorphic Statuette With



299 EUR

Period : 20th century

Condition : Voir descriptif

Material : Solid wood

Height : 24.5 cm hors socle

Description

Tanzania, Nyamwezi People, first half of the 20th century, Ancient anthropomorphic statuette with deep patina

°°° Price can be reasonably negotiated °°°

Monoxylo statuette representing a standing woman planted on short but powerful legs resting on wide feet. The slender body receives a small chest, the arms detached from the body, the hands placed on the top of the thighs, the sex signified by an incision. A high cylindrical neck accommodates a large head with angular ears, almond eyes highlighted with small pearls framing a small flat nose framing a small

Dealer

Cultures & Civilisations

Arts d'Asie / Arts Précolombiens / Arts Premiers

Tel : 04 74 96 36 93

Mobile : 07 88 06 74 56

03 Allée Henri le Navigateur

Villefontaine 38090

quadrangular mouth. The skull formerly covered with a reptile skin (reliquat) and hollowed out at its top with a cavity containing a charge, the cheeks showing subtle scarifications in the shape of a cross.

Nice deep old patina

Usage marks

24.5 cm without stand

Private collection