



PROANTIC  
LE PLUS BEAU CATALOGUE D'ANTIQUITES

Authentic Katana Blade End Of The Edo Period (18th Century), Zaimei, Signed Gensa:

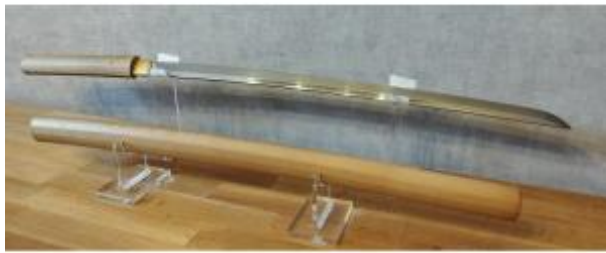
6 600 EUR

Signature : GenSa ? ?

Period : 19th century

Condition : Très bon état

Length : nagasa : 66,6cm



#### Description

Authentic Katana blade from the end of the Edo Period (19th century), Zaimei: "Gen-Sa" ? ? in excellent condition, in Shirasaya and with two inscriptions, one on each side of the Nakago, one referring to the blacksmith "Gen Sa" ? ? of the School: ?????(???????)Either Samoji-ippa, Sue-Sa period. With as blacksmith, most likely a name beginning with: "Masa", of which Masamune is a very famous representative, with a very beautiful Hamon and a magnificent Hada. Without certificate.

Zaimei blade (signed) of very good quality and in very good condition.

Name of the blacksmith: "Gen Sa" ? ?.

Location: "Chikushu Ju" ???, ???(???) (Fukuoka

#### Dealer

L'Atelier du Sabre Japonais

Sale/Restoration of Japanese swords and Bugu - N.B.T.H.K

Member Japon

Mobile : +33 (0) 7-61-13-87-08

Saint-Doulchard 18230

Prefecture, Kyushu), one of the 4 main islands,  
the southernmost Blacksmithing school rated:  
"?????" (???????)Sue-Sa (??)  
Without certificate.

In view of the specific characteristics, this blade,  
by its Sugata and its Hada, as well as the rather  
white appearance of its steel by the work of the  
steel is very likely from the Soshu-den tradition.  
ed: ??????????.

In view of the characteristics and appearance of  
the Nakago (oxidation), this blade most likely  
dates from the end of Shinto, the beginning of  
Shin-Shinto.

#### CHARACTERISTICS:

Total blade length: 81.4cm

Nagasa: 66.6cm

Weight: 568grs

Sori: Height: 0.8cm - Type: Tori-zori

Mekugi-ana: Number: 1

Nakago type: Funa-gata (shaped boat). End type:

Kengyo (Ubu - Original, uncut)

Mune type: Iori-mune

Nagashi: At the level of the Nakago and on the

Mune at the level of the Kissaki.

Sugata type: Shinogi-zukuri

Throats: No-hi (without)

Jihada type: Mokume-hada mixed with an

Itame-hada in Ji and a Masame in Ha

Hamon type: Suguha, Very nice activity

(Hataraki): Sunagashi, Hotsure and Nijuba

Kissaki type: Chu-kissaki (medium)

Boshi type: Kaen

Habaki high quality type: Yujo - Material:

copper, covered with gold leaf

Steel type: Tamahagane

Flaws: This is an old blade, overall in very good  
condition, made hundreds of years ago and has  
some minor flaws and blemishes due to its age  
(Wear marks and minor scratches).

#### SHIRASAYA:

Shirasaya of very good quality and in very good condition.

Without markings